



# 5in LCD Screen Guide

2022 Tiffin RED 340



USER GUIDE - 5in LCD SCREEN

# Contents

- HOME PAGE ..... 2
  - Top Ribbon ..... 3
  - Tank and Battery Status ..... 3
  - Control Center ..... 3
- LIGHTING PAGE ..... 4
  - Interior ..... 4
  - Exterior ..... 4
  - Light Master ..... 4
- SLIDE PAGE ..... 4
  - Slide Extend/Retract ..... 5
  - Front Slide Override ..... 5
  - Slide Run Requirements Status ..... 5
- SETTINGS PAGE ..... 6
  - Screen Brightness Adjust ..... 6
  - Coach Model Select ..... 6
  - Screen Sub-Settings ..... 6
  - Time Adjustment ..... 6
  - GUI Version ..... 6
- GLOSSARY ..... 7
  - General function of screen buttons and indicators ..... 7
  - HOW TO REMOVE A NETWORK CABLE ..... 7
- DIAGNOSTIC LED FEATURES ..... 8
  - NET LED Functions ..... 8
- G-12 MODULE LOCATION ..... 8
- SUPPORT ..... 9

## HOME PAGE

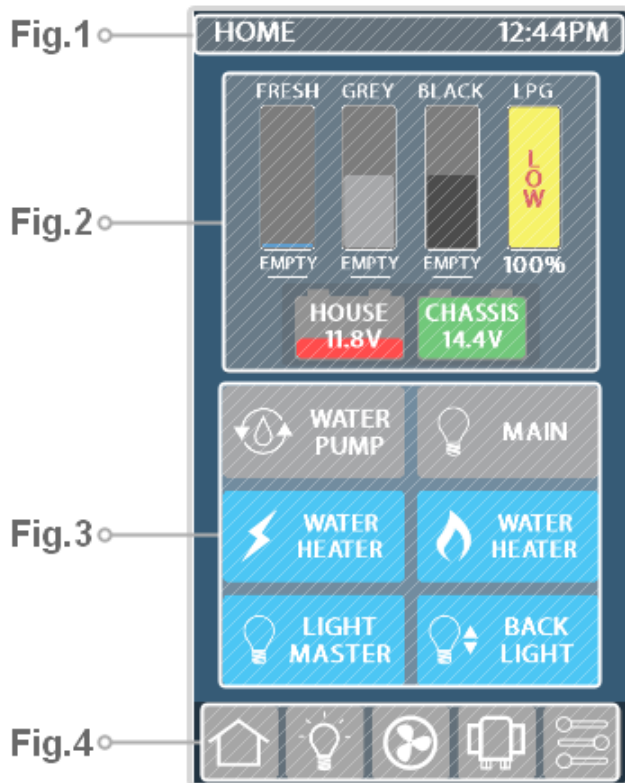


Fig.4 (Bottom Ribbon)



- 1. Home
- 2. Lights
- 3. Fans
- 4. Slides
- 5. Settings

Figure 1 (Top Ribbon)

- This ribbon displays the current page and time, please note the time may not be available on production units.

Figure 2 (Tank and Battery Status)

- This section displays tank levels. The graph will indicate the levels of each tank and will also provide you with a warning when the tanks are low for fresh or full for grey and black. In addition, this section also displays the house battery Voltage.

Figure 3 (Control Center)

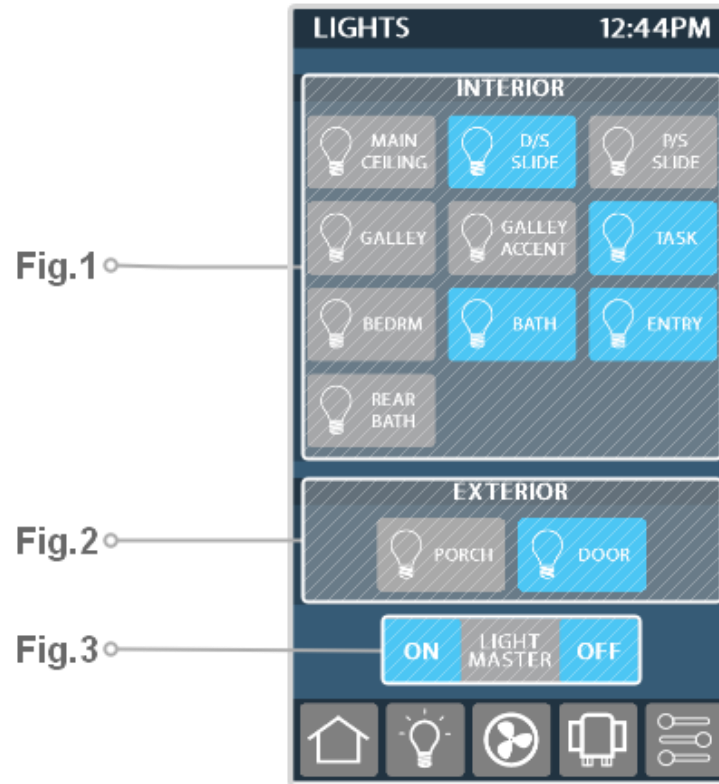
This section allows control of various loads in the coach. Press to toggle the respective loads on and off.

Concerning the Water Heater. Electric, gas or both can be selected to heat the water system.

- The gas will flash if the burner has failed to ignite. Tap the button off then back on to try again. If the burner still does not ignite contact the water heater manufacture for support.

Backlighting and the light master functions will be discussed later in this manual.

# LIGHTING PAGE



## Figure 1 (Interior)

- This section allows control over your main interior lights.

## Figure 2 (Exterior)

- This section controls all of the lights outside the coach.

## Figure 3 (Light Master)

- Press light master off to turn off any lights that are currently on in the coach. Press light master on to turn these same lights back on. Hold light master on to turn on all interior lights at full brightness.

# SLIDE PAGE

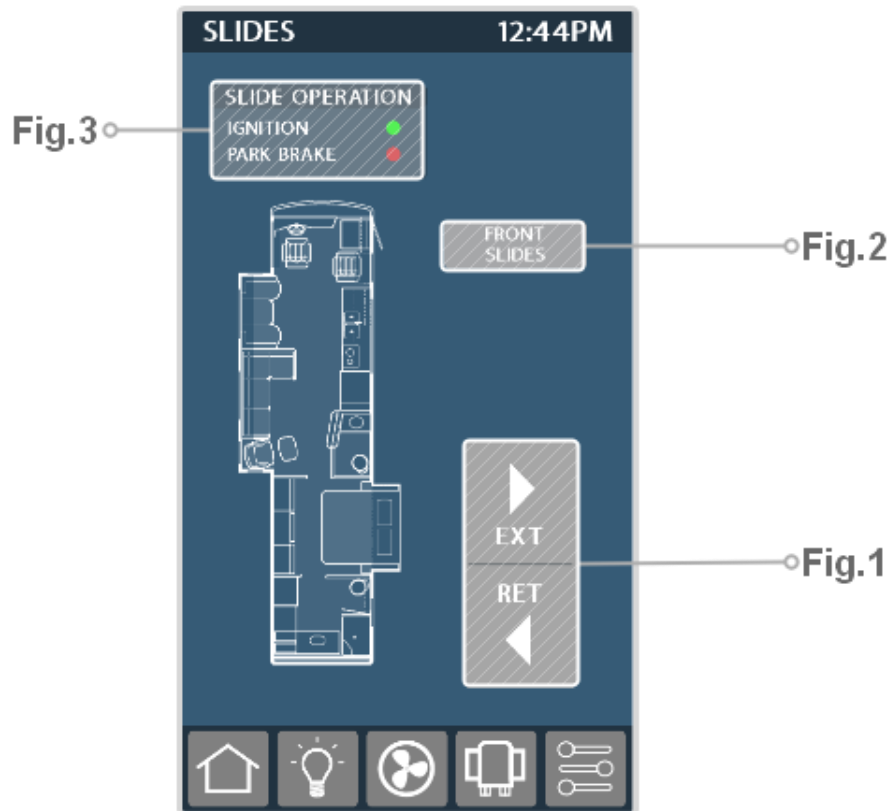


Figure 1 (Slide Extend/Retract)

- Pressing these buttons will extend and retract your slides if the requirements shown in Fig.3 are met.

Figure 2 (Front Slide Override)

- This button will lead you to a page where you can override your front slides by holding the button for 10 se

Figure 3 (Slide Run Requirements Status)

- This section shows the status of ignition, park brake. All must be green before the slides can retract or extend.

# SETTINGS PAGE

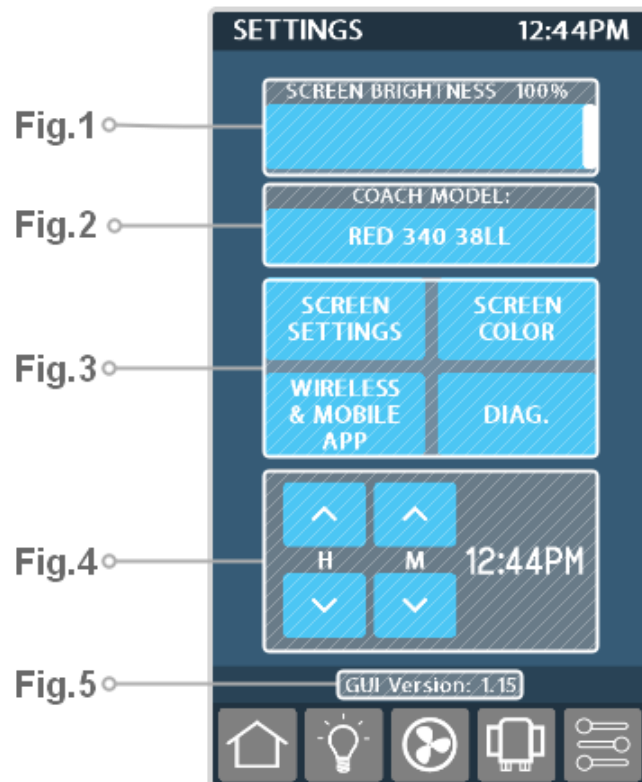


Figure 1 (Screen Brightness Adjust)

- Drag the slider to increase and decrease screen brightness

Figure 2 (Coach Model Select)

- This displays your coach model, if this is set wrong, please contact Spyder Controls.

Figure 3 (Screen Sub-Settings)

- Screen setting provides more advanced screen settings. Screen color allows adjustment of the screen background. Diagnostics is used mostly for service during the troubleshooting process.

Figure 4 (Time Adjustment)

- Use the up and down arrows to adjust the time. , please note the time may not be available on production units

Figure 5 (GUI Version)

- This shows the version of your screens program, Spyder may ask for this during service

# GLOSSARY

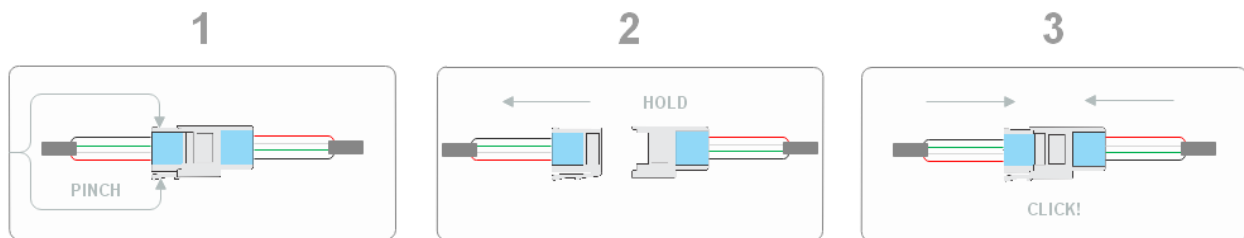
General function of screen buttons and indicators

- Screen buttons will generally be grey when disabled and blue when enabled.
- On diagnostic pages a green dot indicates the load is on while grey indicates a load is off

Load – Any electrical device controlled by the Spyder Multiplex System (i.e. Bathroom Lights, Air conditioner compressor, Water Pump, etc)

Constant Loads – Electrical devices that use constant power to function though they may not user power all of the time (i.e. Dishwash, Fireplace, Washing Machine)

## HOW TO REMOVE A NETWORK CABLE



To remove a network clamp from a socket or another type of connector follow three simple steps

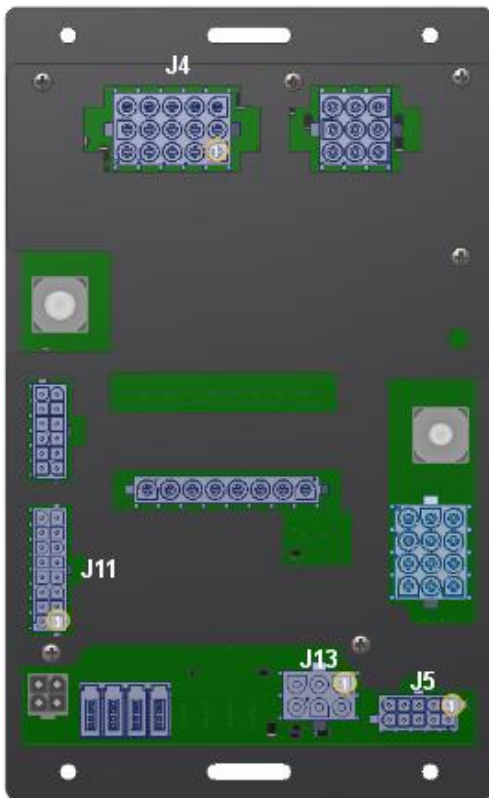
1. Pinch the small black clamp
2. While pinching the plug and holding the socket/connector, pull the plug
3. To reconnect push the plug end into the socket/connector until you hear an audible click

## NET LED STATUS

### NETWORK STATUS LED INDICATOR

- SOLID GREEN - Device is connected to network and communicating properly
- LED OFF - Device has no power or has failed completely
- SOLID RED - Device has gone offline and is not connected to the network
- FAST FLASHING GREEN (4 times / sec) - Device is attempting to make initial connection and claim a network address
- SLOW FLASHING GREEN (1 times / sec) - Device is online but has not seen a valid network message in 5 seconds
- ALTERNATING RED & ORANGE - Device has gone offline and is attempting to re-connect (within 30 seconds)
- ALTERNATING GREEN & ORANGE - Device is currently online but has gone offline 2 or more times

# G-12 Location

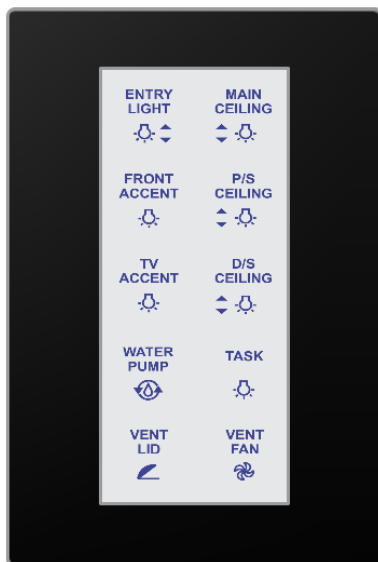


## G-12 Module

The G-12 Module controls several of the DC loads in the motorhome. It is located under the foot of the bed.

During trouble shooting Spyder Controls may ask you to locate this panel.

The diagram to the left will serve as a general guide to the layout of your G-12 Module.



## NET LED Functions

The NET LED (Network LED) is used to identify the network status of a module (i.e. Switch panel, G-12 pictured here). NET LED's are useful for trouble shooting and identifying and issue with a coach.

A chart is provided on the PREVIOUS page to help break down what the various states of the NET LED mean.

# SUPPORT

If you have any questions or concerns about your Spyder Controls Multiplex System please contact Spyder Controls toll free at (866) 919-9092 or reach us by email at [info@spydercontrols.com](mailto:info@spydercontrols.com).

For service manuals and helpful videos on your coach please visit [Spydercontrols.com](http://Spydercontrols.com) press "login" then enter the following information into the username and password fields

Username: Tiffin

Password: Motorhomes



Use your phone camera or QR code scanner to view our website