




Multiplex Integration Schematic

2022 Wayfarer Cahaba

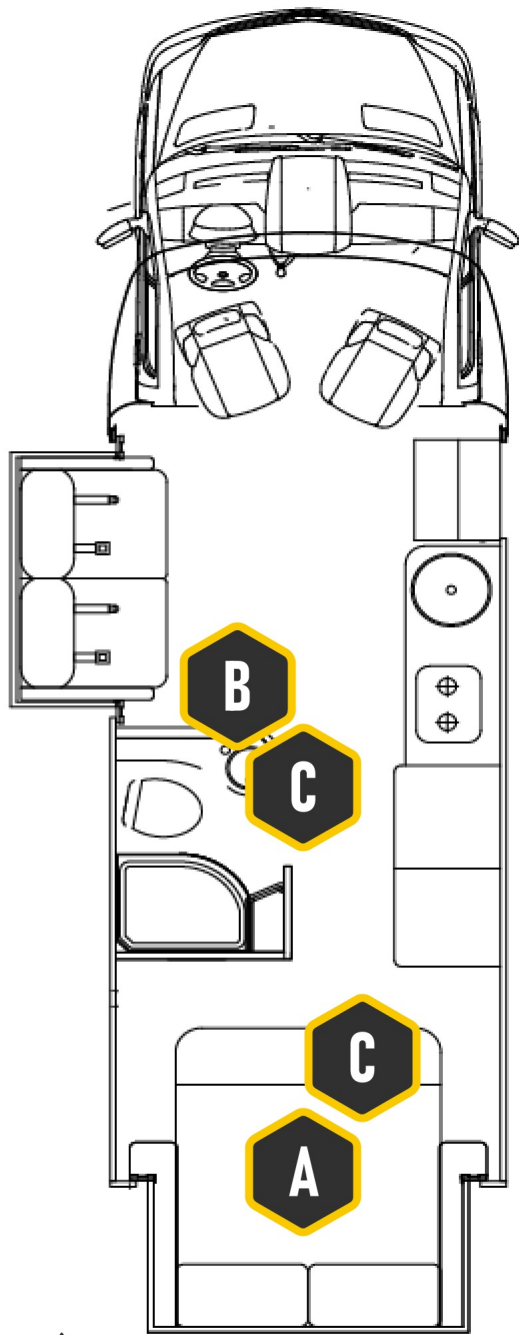
Table of Contents

- 1 Component Locations
- 2 G12 Pinout
- 3 Lighting
- 4 Tanks
- 5 Network
- 6 Mechanical
- 7 Network

Schematic Connections Legend

	Constant Ground		Reverse Polarity
	Constant 12V+		Signal
	Switched Ground		Network
	Switched 12V+	! COMPONENTS ARE NOT TO SCALE !	





9"

6"

G12 Module **A**

Spyder Part Number BMODZU2VG Tiffin Part Number 51XXXX

📍 Foot Of The Bed

5.7"

3.5"

5" LCD **B**

Spyder Part Number BSSPZZREB Tiffin Part Number 51XXXX

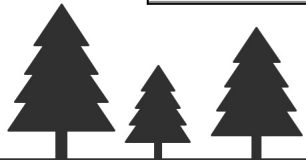
📍 Hall Wall

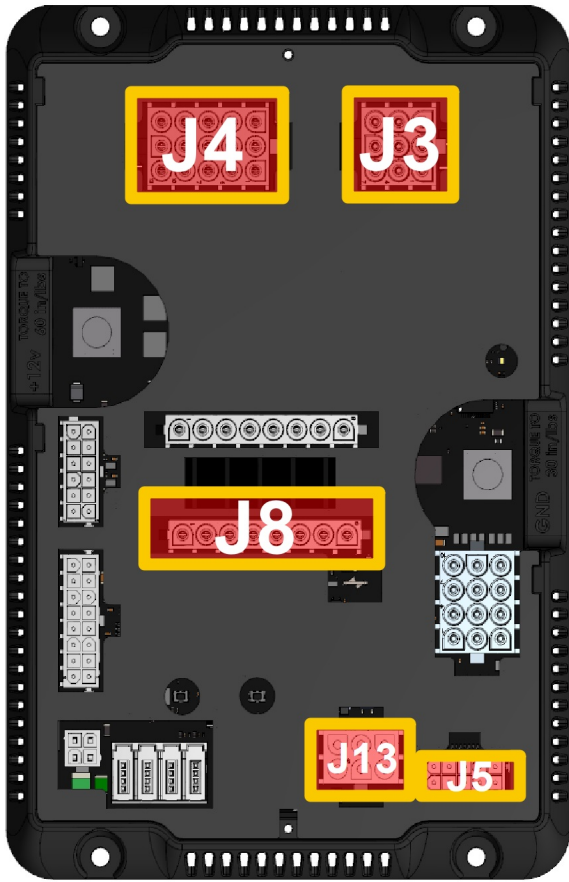
Terminator Connector **C**

Spyder Part Number BBCKZG700

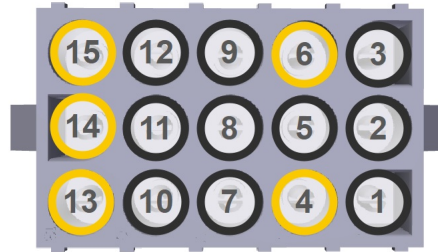
Tiffin Part Number 51XXXX

📍 Network Cable Between 5" and G12



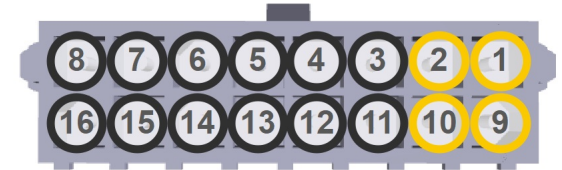


J4



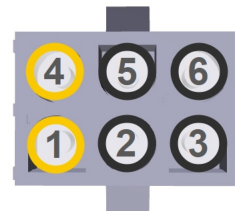
- 4 CH 33 - Awning Light
- 6 CH 35 - Drivers OH Light
- 13 CH 42 - Galley OH Lights
- 14 CH 43 - Galley OH Accent Lights
- 15 CH 44 - Galley Base Accent Lights

J11



- 1 Tank 1 Sig. Fresh
- 2 Tank 2 Sig. Grey
- 9 Tank 1 Sig. Fresh
- 10 Tank 2 Sig. Grey

J13



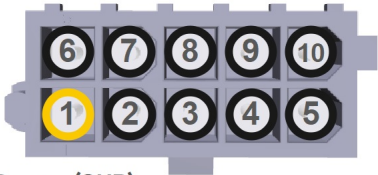
- 1 LPG Sensor Input
- 4 LPG Sensor Ground

J8



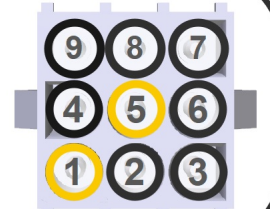
- 1 Bed Lift Up
- 2 Bed Lift Down
- 3 Water Pump
- 4 Tank Heat 1 & 2

J5



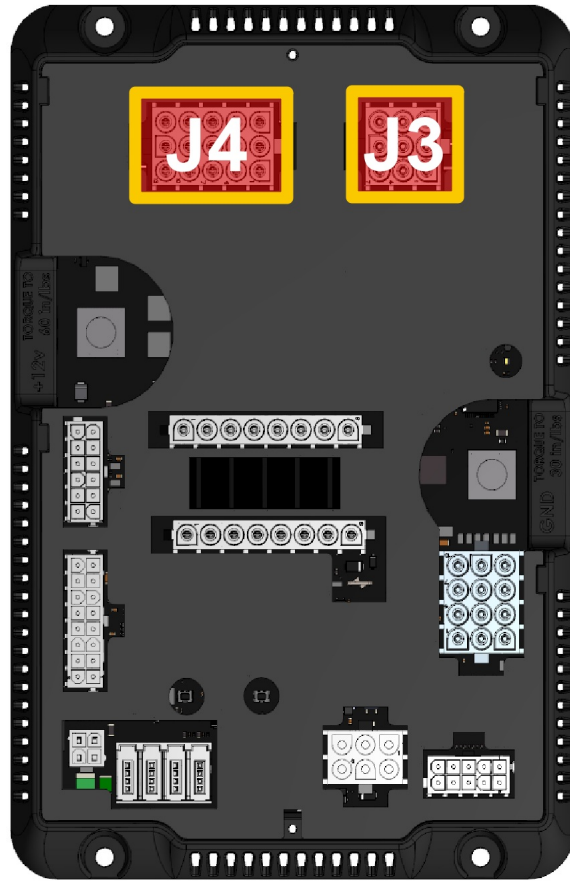
- 1 Water Pump (GND)

J3



- 1 CH 21 - Overhead Lights
- 5 CH 25 - Bedroom Accent Lights





G12 Module

J4

15	12	9	6	3
14	11	8	5	2
13	10	7	4	1

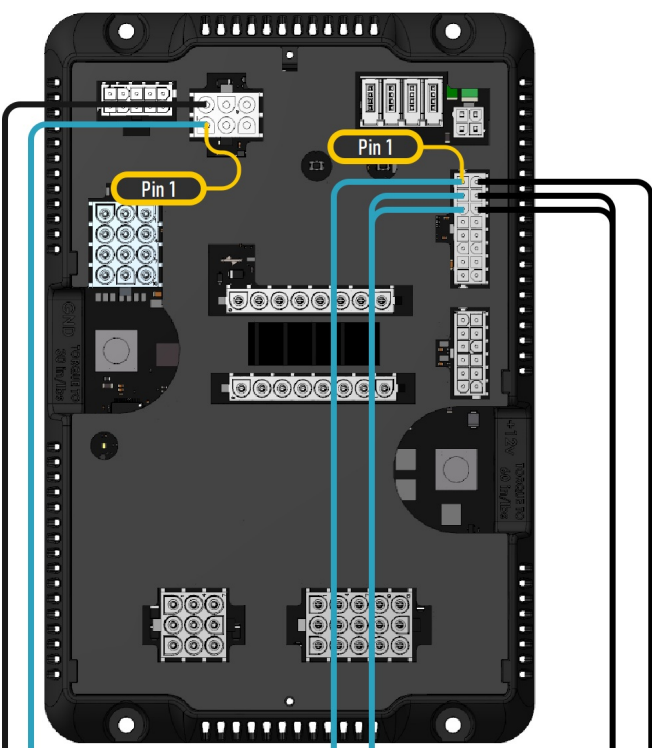
- 4 CH 33 - Awning Light
- 6 CH 35 - Drivers OH Light
- 13 CH 42 - Galley OH Lights
- 14 CH 43 - Galley OH Accent Lights
- 15 CH 44 - Galley Base Accent Lights

J3

9	8	7
4	5	6
1	2	3

- 1 CH 21 - Overhead Lights
- 5 CH 25 - Bedroom Accent Lights





J13

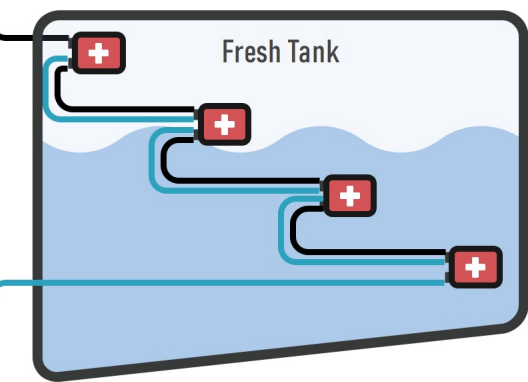
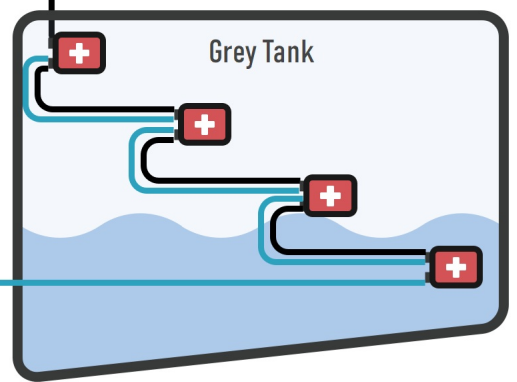
- ① LPG Sensor Input
- ④ LPG Sensor Ground

A 6-pin connector diagram with pins numbered 1 through 6. Pins 1, 2, and 3 are in the bottom row, and pins 4, 5, and 6 are in the top row. Pins 1 and 4 are highlighted with yellow circles.

J11

① Tank 1 Sig. Fresh	⑨ Tank 1 Sig. Fresh
② Tank 2 Sig. Grey	⑩ Tank 2 Sig. Grey
③ Tank 2 Sig. Black	⑪ Tank 2 Sig. Black

A 16-pin connector diagram with pins numbered 1 through 16. The top row contains pins 8, 7, 6, 5, 4, 3, 2, 1 from left to right. The bottom row contains pins 16, 15, 14, 13, 12, 11, 10, 9 from left to right. Pins 1, 2, 3, 9, 10, and 11 are highlighted with yellow circles.



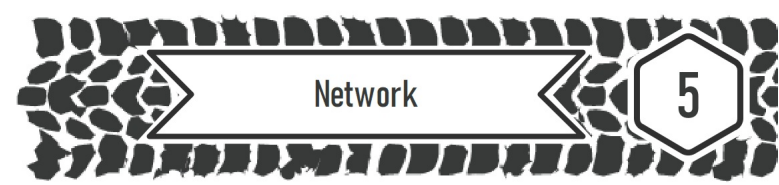
G12 Module



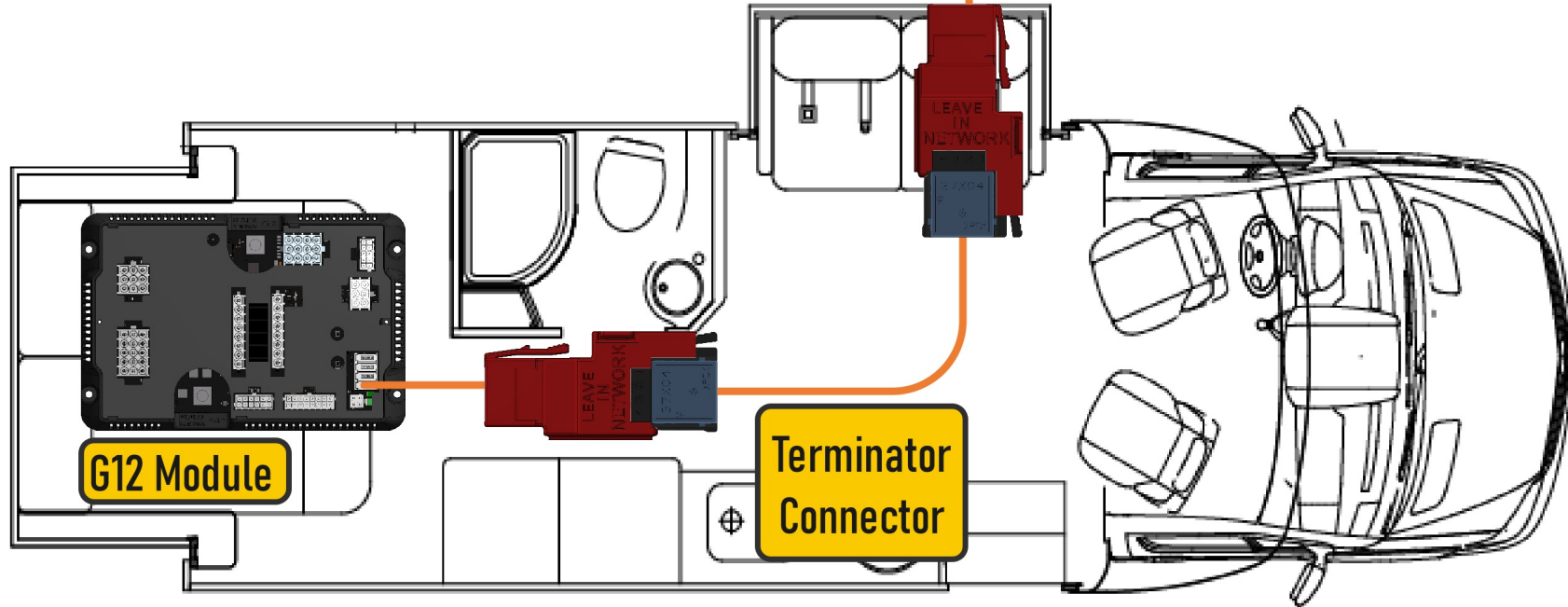
NETWORK STATUS LED INDICATOR

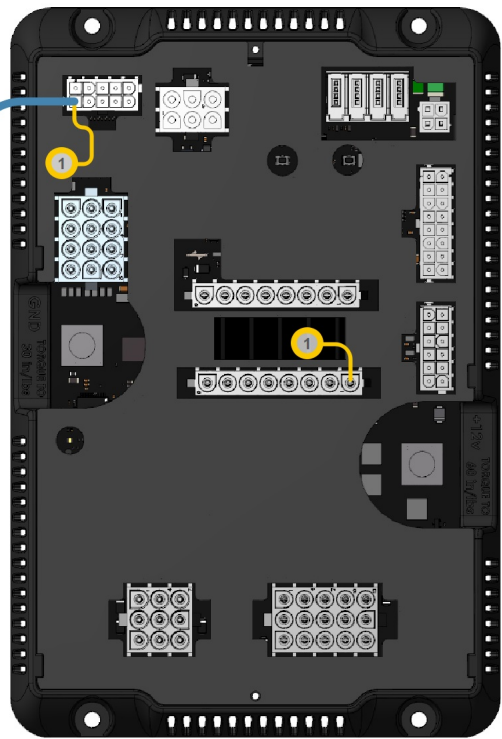
Each networked device has a NET LED on it for diagnostic purposes. This LED may be used to interpret the network health using the chart below.

- **SOLID GREEN** - Device is connected to network and communicating properly
- **LED OFF** - Device has no power or has failed completely
- **SOLID RED** - Device has gone offline and is not connected to the network
- **FAST FLASHING GREEN (4 times / sec)** - Device is attempting to make initial connection and claim a network address
- **SLOW FLASHING GREEN (1 times / sec)** - Device is online but has not seen a valid network message in 5 seconds
- **ALTERNATING RED & ORANGE** - Device has gone offline and is attempting to re-connect (within 30 seconds)
- **ALTERNATING GREEN & ORANGE** - Device is currently online but has gone offline 2 or more times

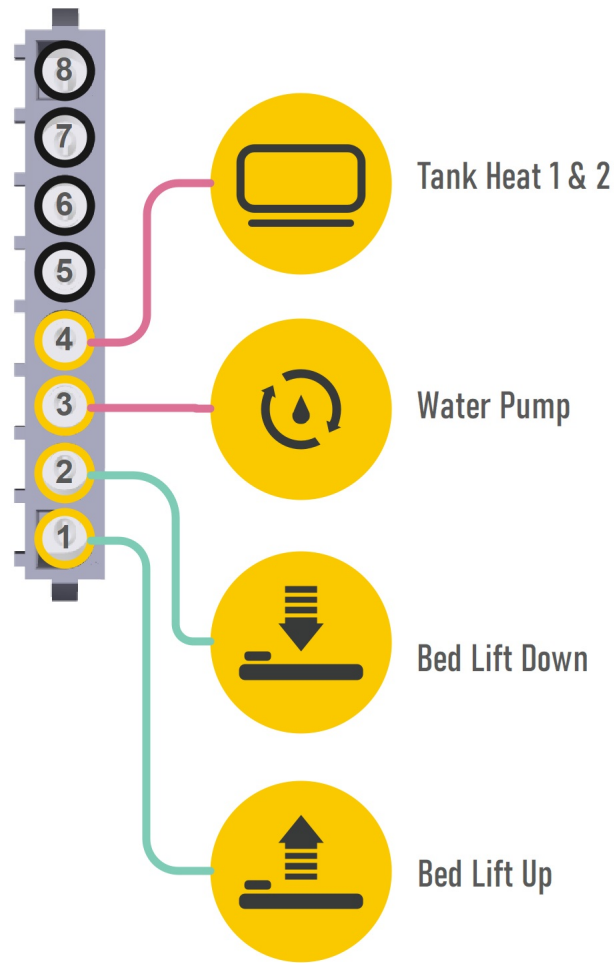


5" LCD





G12 Module



J8



- 1 Bed Lift Up
- 2 Bed Lift Down
- 3 Water Pump
- 4 Tank Heat 1 & 2

Troubleshooting

If the need arises and troubleshooting is required for your Spyder System, please call us at 866-919-9092 or email us at info@spydercontrols.com.

Remember to keep a multi-meter, screwdriver, and flashlight in your coach, these tools can be useful for troubleshooting.

We recommend printing off this guide and keeping it with you in the coach.



