

**G6A CONTROL PANEL LAYOUT**  
**Tiffin PN: 5079064 Spyder PN: BENCZ52CG**  
**2019 BUS/PHTN - HOUSE Rev 0vA**  
**PINOUT DIAGRAM - 08/01/2018**

**Back View**

- CONNECTOR 4**
- 4-1 (G6 LED 13) REAR BATH/MID SINK CEILING LIGHTS
  - 4-2 (G6 LED 14) TASK LIGHTS
  - 4-3 (G6 LED 15) MID BATH CEILING LIGHTS
  - 4-4 (G6 LED 16) MID BATH VANITY LIGHTS

- CONNECTOR 5**
- 5-1 (G6 LED 17) REAR BATH/MID SINK VANITY LIGHTS
  - 5-2 (G6 LED 18) TV ACCENT LIGHTS
  - 5-3 (G6 LED 19) FR ACNT LIGHTS
  - 5-4 (G6 LED 20) FR ACNT LIGHTS

- CONNECTOR 6**
- 6-1 (G6 LED 21) BED ACCENT
  - 6-2 (G6 LED 22) SPARE
  - 6-3 (G6 LED 23) RR ACNT LIGHTS
  - 6-4 (G6 LED 24) RR ACNT LIGHTS

- CONNECTOR 10**
- 10-1 (G6 LED 37) FLR HT ZONE 1
  - 10-2 (G6 LED 38) FLR HT ZONE 2
  - 10-3 (G6 LED 39) SPARE
  - 10-4 (G6 LED 40) SPARE

- CONNECTOR 11**
- 11-1 (G6 LED 41) BED LIFT UP
  - 11-2 (G6 LED 42) BED LIFT DN
  - 11-3 (G6 LED 43) FR TV LIFT UP
  - 11-4 (G6 LED 44) FR TV LIFT DN

J17---- FR TV LIFT COMMON

J18---- FR TV LIFT COMMON

J19---- RR TV LIFT COMMON

J20---- RR TV LIFT COMMON

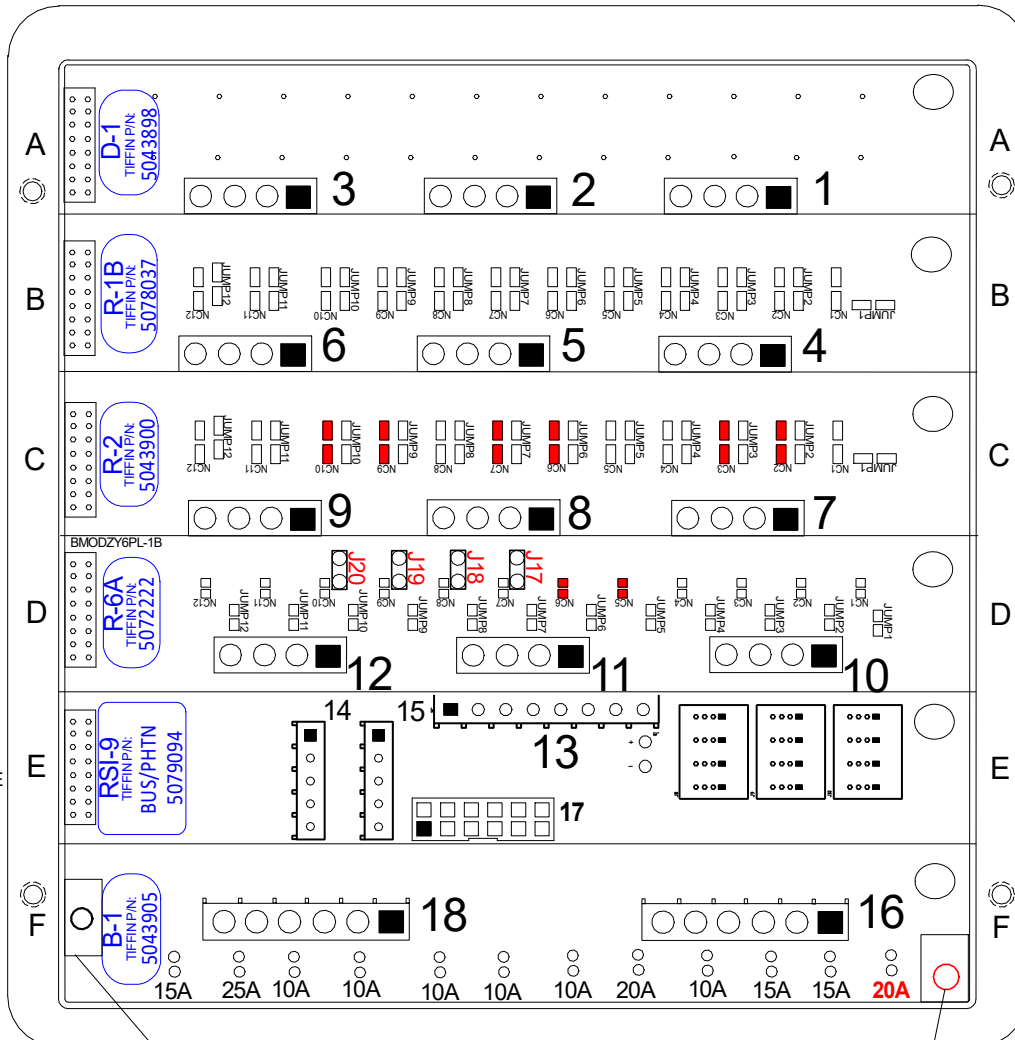
- CONNECTOR 12**
- 12-1 (G6 LED 45) BED TV LIFT UP
  - 12-2 (G6 LED 46) BED TV LIFT DN
  - 12-3 (G6 LED 47) FIREPLACE OVERRIDE
  - 12-4 (G6 LED 48)

- CONNECTOR 17**
- 17-6
  - 17-5 REAR AC THERMISTOR
  - 17-4 MID AC THERMISTOR
  - 17-3 FRONT AC THERMISTOR
  - 17-2 REAR FLOOR HT THERMISTOR
  - 17-1 FRONT FLOOR HT THERMISTOR

- CONNECTOR 14 (12V+ INPUTS)**
- 14-1 WTR HTR STATUS
  - 14-2 GEN FAULT STATUS 12V+
  - 14-3
  - 14-4 BED LIFT PLUNGER
  - 14-5

- CONNECTOR 15 (GND INPUTS)**
- 15-1
  - 15-2 BEDROOM LIGHT SWITCH
  - 15-3 CLOSET LIGHT SW
  - 15-4 DASH ACNT LT ON
  - 15-5 DASH ACNT LT OFF

GND



**OPERATIONAL GROUND PEM STUD**

**12V Power Stud**

- CONNECTOR 18**
- 18-1 - BREAKER #67
  - 18-2 - BREAKER #68
  - 18-3 - BREAKER #69
  - 18-4 BRKR TO RR SLIDE - BREAKER #70
  - 18-5 FRIDGE - BREAKER #71
  - 18-6 - BREAKER #72

- CONNECTOR 16**
- 16-1 - BREAKER #61
  - 16-2 FRONT FURNACE - BREAKER #62
  - 16-3 REAR FURNACE - BREAKER #63
  - 16-4 SWITCHER / LP/IR - BREAKER #64
  - 16-5 OUTSIDE TV - BREAKER #65
  - 16-6 - BREAKER #66

- CONNECTOR 1**
- 1-1 (G6 LED 1) MAIN O/H / LIV RM LIGHT
  - 1-2 (G6 LED 2) ENTRY / FLOOR LIGHT
  - 1-3 (G6 LED 3) PS CEILING LIGHTS
  - 1-4 (G6 LED 4) DS CEILING LIGHTS

- CONNECTOR 2**
- 2-1 (G6 LED 5) HALL / DASH ACCENT LTS
  - 2-2 (G6 LED 6) PS SLIDE LIGHTS
  - 2-3 (G6 LED 7) SCONCE
  - 2-4 (G6 LED 8) DS SLIDE LIGHTS

- CONNECTOR 3**
- 3-1 (G6 LED 9) FR CRTSY LIGHTS
  - 3-2 (G6 LED 10) RR CRTSY LIGHTS
  - 3-3 (G6 LED 11) BED SCONCE LIGHTS
  - 3-4 (G6 LED 12) BEDROOM LIGHTS

- CONNECTOR 7**
- 7-1 (G6 LED 25) GALLEY FAN ON/OFF
  - 7-2 (G6 LED 26) GALLEY FAN UP
  - 7-3 (G6 LED 27) GALLEY FAN DN
  - 7-4 (G6 LED 28) CLOSET LIGHTS (OPTIONAL)

- CONNECTOR 8**
- 8-1 (G6 LED 29) MID BATH FAN ON/OFF
  - 8-2 (G6 LED 30) MID BATH FAN UP
  - 8-3 (G6 LED 31) MID BATH FAN DN
  - 8-4 (G6 LED 32) REAR BATH / MID SINK FAN ON/OFF

- CONNECTOR 9**
- 9-1 (G6 LED 33) REAR BATH / MID SINK FAN UP
  - 9-2 (G6 LED 34) REAR BATH / MID SINK FAN DN
  - 9-3 (G6 LED 35) CEILING FAN LO
  - 9-4 (G6 LED 36) CEILING FAN HI

- CONNECTOR 13**
- 13-1
  - 13-2 CONSTANT 12V+ (BATT)
  - 13-3 GND (COMMON FOR SENSORS)
  - 13-4 LPG SENSOR INPUT
  - 13-5 BLACK TANK SENSOR
  - 13-6 GREY TANK SENSOR
  - 13-7 FRESH TANK SENSOR
  - 13-8

**R=RELAY CARD**  
**B=BREAKER CARD**  
**RSI-9=INPUT MODULE**  
**D=DIMMER CARD**  
**■ = JUMPERED**

NOTE: CONNECTORS ARE SHOWN HERE IN THE LOADED (REAR) VIEW.

**G6A CONTROL PANEL LAYOUT**  
**Tiffin PN: 5077970 Spyder PN: BENCZ54CG**  
**2019 BUS/PHTN/ZEPHYR - CHASSIS Rev 1V0**  
**PINOUT DIAGRAM - 08/01/2018**

**Back View**

Card Legend

- R=RELAY CARD
- B=BREAKER CARD
- BR=BREAKER/RELAY CARD
- D=DIMMER CARD
- = JUMPERED

- CONNECTOR 4**
- 4-1 (LED 13) AWNING LIGHT
  - 4-2 (LED 14) HEADLIGHTS (INDICATION FLASH)
  - 4-3 (LED 15) DOOR / ASSIST HANDLE
  - 4-4 (LED 16) SPARE

- CONNECTOR 5**
- 5-1 (LED 17) SOFA DAY SHD UP
  - 5-2 (LED 18) SOFA DAY SHD DN
  - 5-3 (LED 19) SOFA NIGHT SHD UP
  - 5-4 (LED 20) SOFA NIGHT SHD DN

- CONNECTOR 6**
- 6-1 (LED 21) STEP EXT
  - 6-2 (LED 22) STEP RET
  - 6-3 (LED 23) GEN START
  - 6-4 (LED 24) GEN STOP

- CONNECTOR 7**
- 7-1 (LED 25) U-COACH ACNT (PARK)
  - 7-2 (LED 26) WNDSHLD ACNT LT
  - 7-3 (LED 27) MAP LT
  - 7-4 (LED 28) SPARE

- CONNECTOR 8**
- 8-1 (LED 29) PASSENGER FAN HI
  - 8-2 (LED 30) PASSENGER FAN LO
  - 8-3 (LED 31) ROAD LIGHT
  - 8-4 (LED 32) PORCH LIGHT

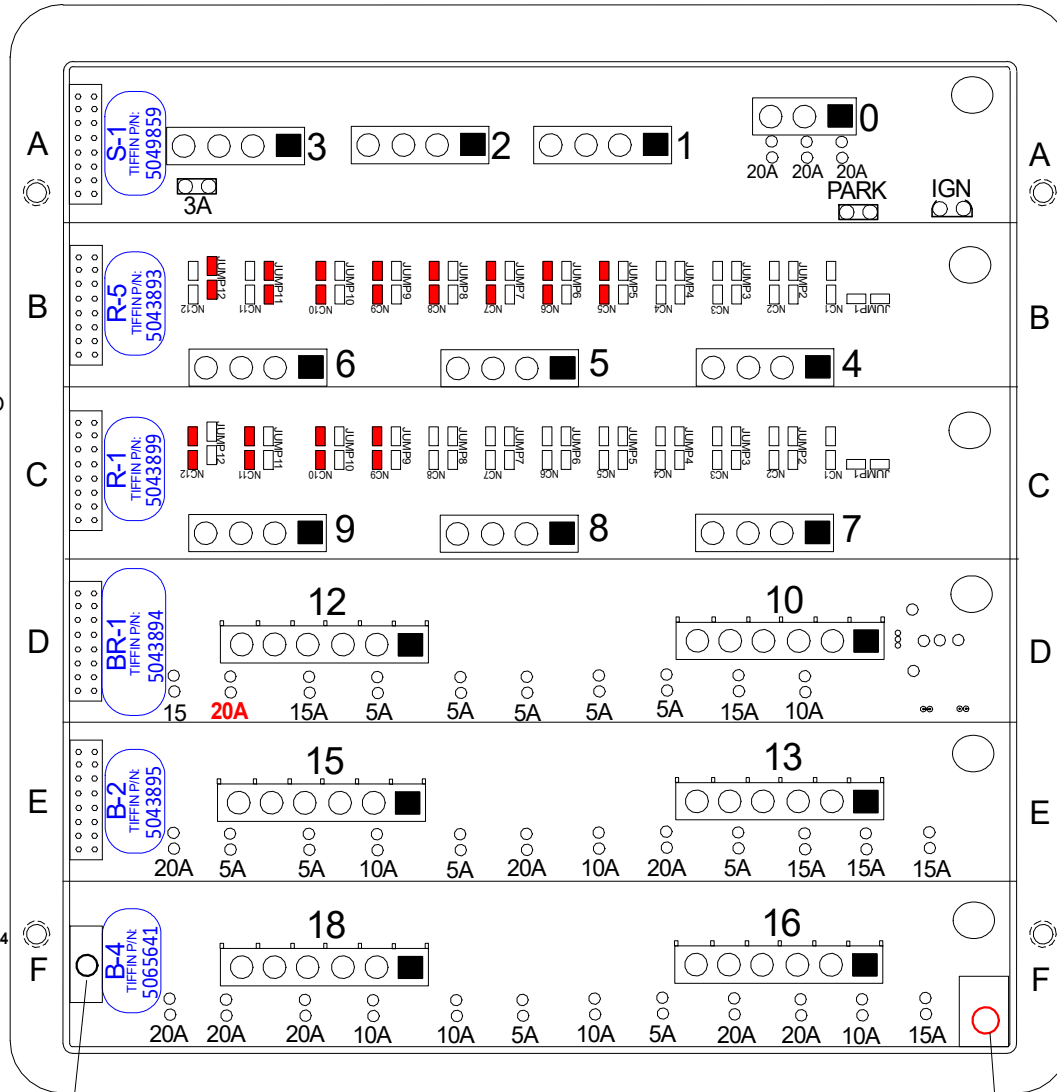
- CONNECTOR 9**
- 9-1 (LED 33) SPARE
  - 9-2 (LED 34) SPARE
  - 9-3 (LED 35) GLY NIGHT SHD UP
  - 9-4 (LED 36) GLY NIGHT SHD DN

**PARK BRAKE SIGNAL**

**IGNITION SIGNAL**

- CONNECTOR 13**
- 13-1 MAP LT / RADIO / FANS - BREAKER #49
  - 13-2 DASH USB POWER - BREAKER #50
  - 13-3 - BREAKER #51
  - 13-4 ENTRY STEP SWITCH - BREAKER #52
  - 13-5 ENTRY STEP POWER - BREAKER #53
  - 13-6 KEYLESS ENTRY POWER - BREAKER #54

- CONNECTOR 15**
- 15-1 POWER SEAT #1 - BREAKER #55
  - 15-2 CB - BREAKER #56
  - 15-3 ELEC STEP COVER - BREAKER #57
  - 15-4 SATELITE - BREAKER #58
  - 15-5 DASH SHADE MODULE - BREAKER #59
  - 15-6 POWER SEAT #2 - BREAKER #60



**OPERATIONAL GROUND PEM STUD**

**12V Power Stud**

NOTE: CONNECTORS ARE SHOWN HERE IN THE LOADED (REAR) VIEW.

- CONNECTOR 0**
- 0-1 FRONT SLIDE MODULE
  - 0-2 VANITY SLIDE MODULE
  - 0-3 BED SLIDE MODULE

- CONNECTOR 1**
- 1-1 (LED 1) D/S FR SLIDE RET
  - 1-2 (LED 2) D/S FR SLIDE EXT
  - 1-3 (LED 3) P/S FR SLIDE RET
  - 1-4 (LED 4) P/S FR SLIDE EXT

- CONNECTOR 2**
- 2-1 (LED 5) D/S RR SLIDE RET
  - 2-2 (LED 6) D/S RR SLIDE EXT
  - 2-3 (LED 7) P/S RR SLIDE RET
  - 2-4 (LED 8) P/S RR SLIDE EXT

- CONNECTOR 3**
- 3-1 (LED 9) HYDRAULIC PMP - D/S SLIDE
  - 3-2 (LED 10) HYDRAULIC PMP - P/S SLIDE
  - 3-3 (LED 11) PORCH/DOOR AWNING CONST
  - 3-4 (LED 12) SPARE

- CONNECTOR 3A**
- 3A-1

- CONNECTOR 10**
- 10-1 - BREAKER #37
  - 10-2 - BREAKER #38
  - 10-3 DENSO A/C PWR IGN(YLW) - BREAKER #39
  - 10-4 MIRRORS - BREAKER #40
  - 10-5 CAMERA IGN - BREAKER #41
  - 10-6 JACK BUZZER - BREAKER #42

- CONNECTOR 12**
- 12-1 PANEL LAMP/HEADLT LED - BREAKER #43
  - 12-2 FRIDGE - BREAKER #44
  - 12-3 ENTRY STEP IGN - BREAKER #45
  - 12-4 DOCK LIGHT - BREAKER #46
  - 12-5 - BREAKER #47
  - 12-6 POWER WINDOW OPTION - BREAKER #48

- CONNECTOR 16**
- 16-1 RADIO MEMORY / XM PWR - BREAKER #61
  - 16-2 DENSO A/C POWER - BREAKER #62
  - 16-3 12V+ OUTLET #1 - BREAKER #63
  - 16-4 12V+ OUTLET #2 - BREAKER #64
  - 16-5 ENGINE PREHEAT SWITCH - BREAKER #65
  - 16-6 PASS USB / TRIMARK HANDLE - BREAKER #66

- CONNECTOR 18**
- 18-1 - BREAKER #67
  - 18-2 - BREAKER #68
  - 18-3 - BREAKER #69
  - 18-4 - BREAKER #70
  - 18-5 - BREAKER #71
  - 18-6 - BREAKER #72

4 3 2 1

D

D

C

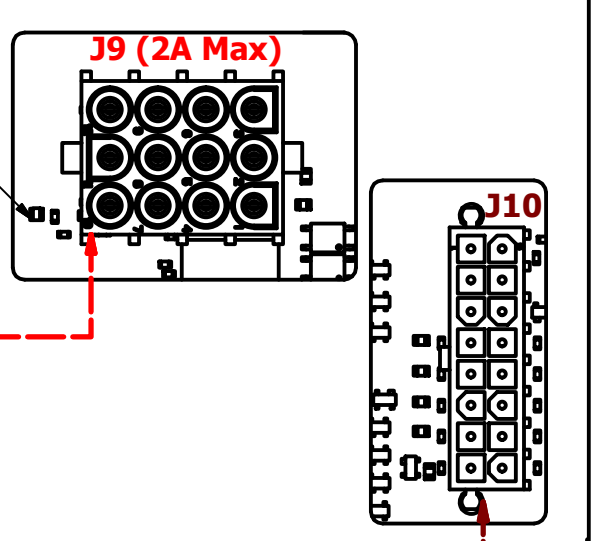
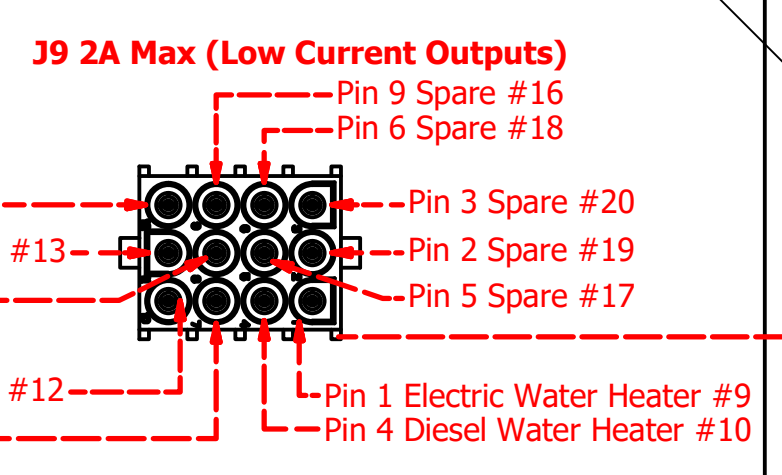
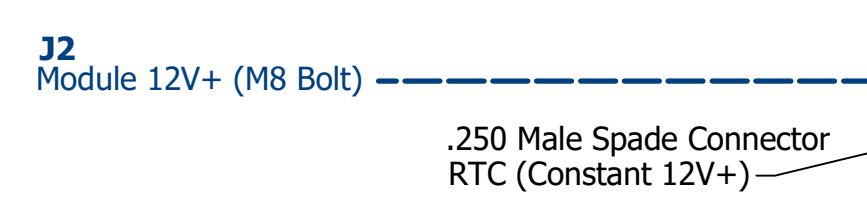
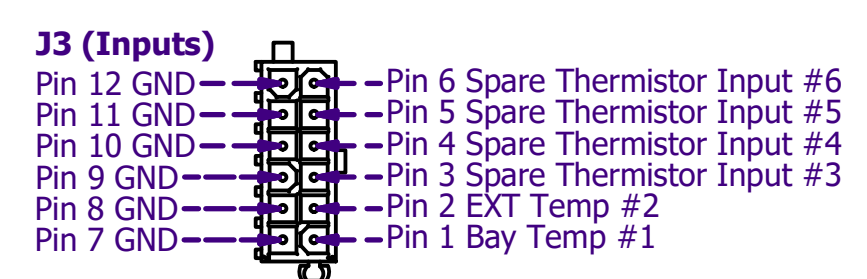
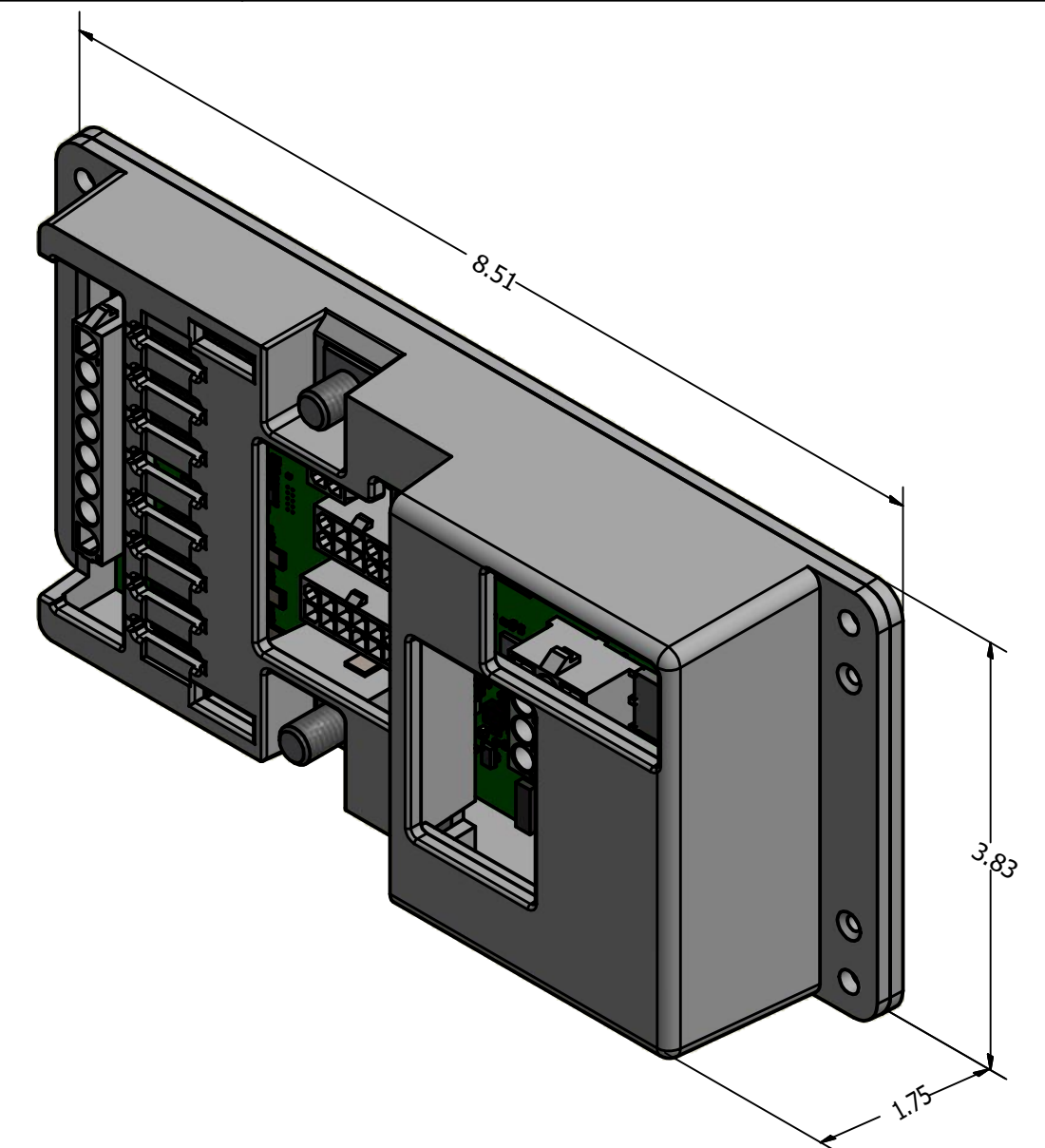
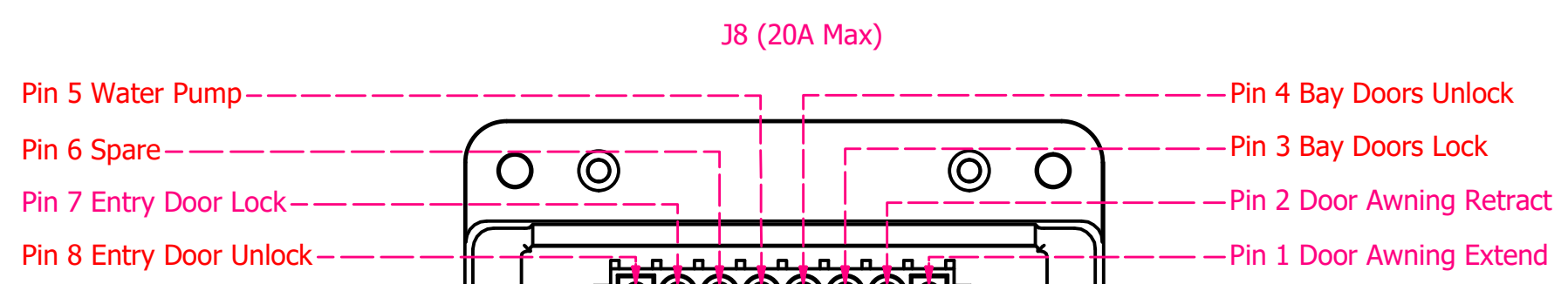
C

B

B

A

A



**NOTES**

Switch inputs, voltage sensing and current sensing will function as long as the module is powered on the main power stud (J2) or the Generator or Ignition inputs on J10

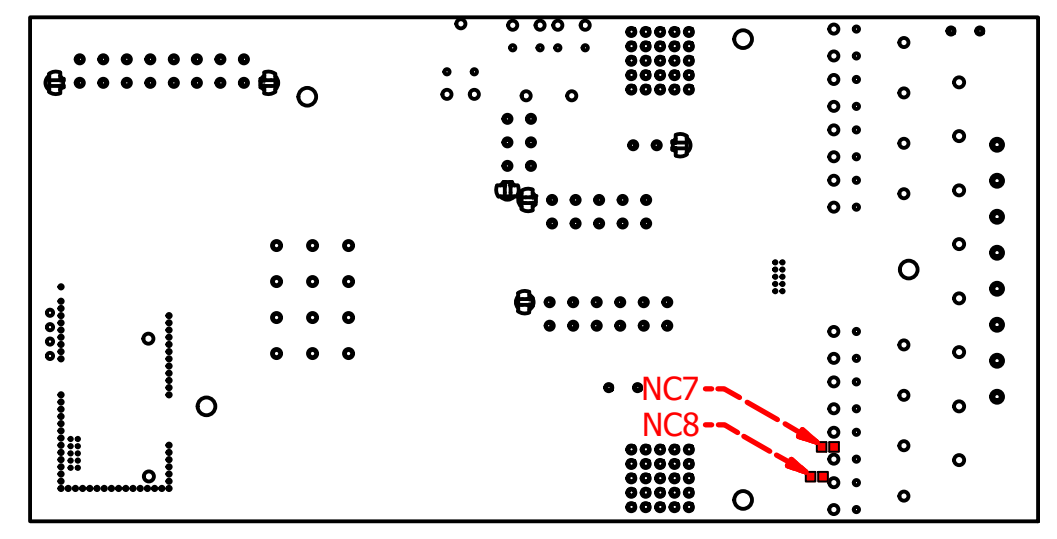
\*Merge Output #23 on J6 is powered by the house or ignition inputs

NC7-NC8 are bridged for Ch7-Ch8, respectively

NET LED Status	
LED Activity	Status
	Solid Green Device is connected to network and communicating properly
	Off Device has no power or has completely failed
	Solid Red Device has gone offline and is not connected to network
	Fast Flashing Green (4 times/sec) Device is attempting to make initial connection to network
	Slow Flashing Green (1 time/sec) Device was online but has not seen a valid network message for 5 seconds
	Alternating Red & Orange Device has gone offline and is attempting to re-connect (within 30 seconds)
	Alternating Green & Orange Device is currently online but has gone offline 2 or more times

PINS				Torque Spec		
MFG	PN	DESC	MATE	Min	Max	Bolt
TE	1-770834-0	30-26 AWG MATE-N-LCOK	J10, J6, J4, J3, J1	60 in-lbf	70 in-lbf	J2
TE	350218-3	20-14 AWG MATE-N-LOCK	J9			
TE	350218-1	20-14 AWG MATE-N-LOCK	J8			

MATING CONNECTORS			
MFG	PN	DESC	MATE
TE	770583-1	16 POS MINI MATE-N-LOCK	J10
TE	1-480708-0	12 POS MATE-N-LOCK	J9
TE	640582-1	8 POS MATE-N-LOCK	J8
TE	172168-1	6 POS MINI MATE-N-LOCK	J6
TE	770580-1	10 POS MINI MATE-N-LOCK	J4
TE	770581-1	12 POS MINI MATE-N-LOCK	J3
TE	172165-1	2 POS MINI MATE-N-LOCK	J1



SPYDER CONROLS CORPORATION

TITLE  
**G8 Module Pinout**

SIZE <b>C</b>	ALL DIMENSIONS IN INCHES	PART# <b>BMODZTGCG</b>	REV 1v1
SCALE <b>1:1</b>	2018-04-03	SHEET 1 OF 1	

4 3 2 1