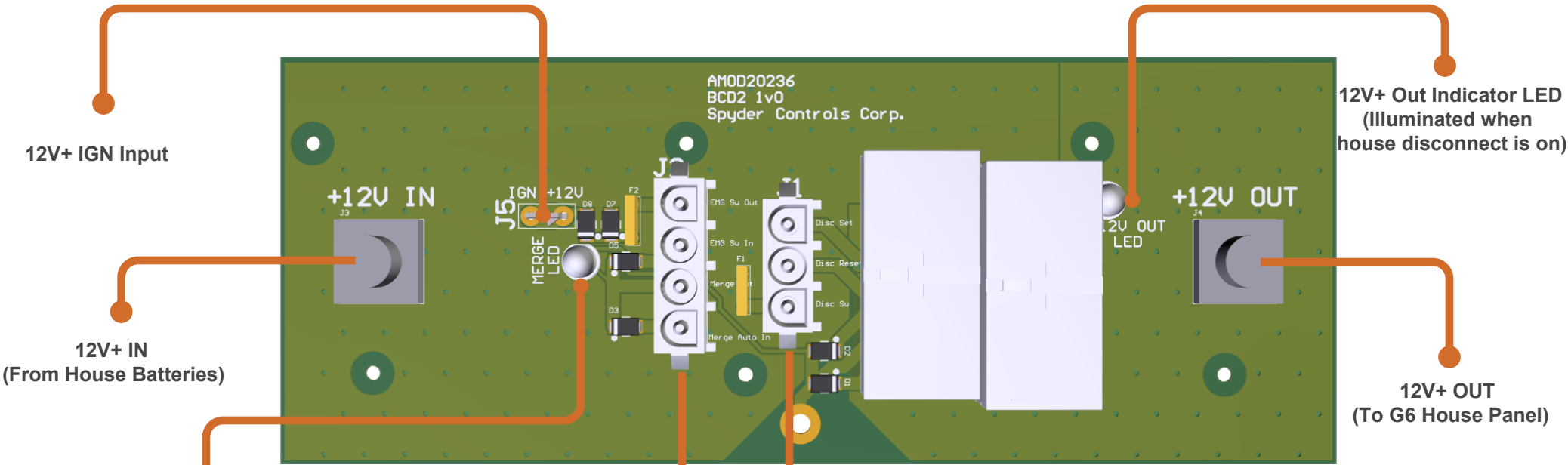


BDC2 PINOUT

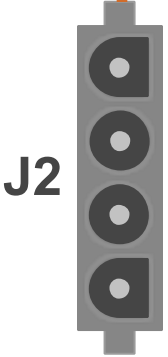


MERGE LED

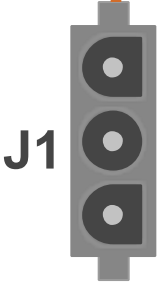
This LED will illuminate when a merge is active. If the house and chassis batteries are not merging check this LED. If for any reason the coach is not merging please review the merge help documents located in the integration schematics.

Not Merge

Merge



- PIN 4 12V+ to Emerg. Merge Sw
- PIN 3 12V+ from Emerg. Merge Sw
- PIN 2 Merge Out to Solenoid
- PIN 1 Auto Merge In from G8



- PIN 3 12V+ Back from Switch (On)
- PIN 2 12V+ Back from Switch (Off)
- PIN 1 12V+ Supply to Disconnect Switch