



7in LCD Screen Guide

2018 BUS / PHAETON / ZEPHYR



USER GUIDE - 7in LCD SCREEN

Contents

- HOME PAGE 5
 - Lighting Section 5
 - Tank Section 5
 - Climate Section 5
 - Power Section 5
 - Information / Quick Action Ribbon 5
 - Active Fault Warning 5
 - Floor Heat 6
 - Select Source 6
 - GEN / AGS 6
 - INV / CHG 6
- LIGHTING PAGE 7
 - Exterior 7
 - Main 7
 - Bed/Bath Lights 7
 - Light Master 7
- POWER PAGE 8
 - Inverter / Charger Control + Settings 8
 - EMS 8
 - AGS/GEN 8
 - GEN Icon 8
 - Shore Power Select and Status 8
 - EMS Load Display 9
- CLIMATE PAGE 10
 - Zone + Ambient Temperature 10
 - HVAC Mode Select 10

Floor Heat	10
Water Heater	11
Fan Control.....	11
Temperature Set Point.....	11
MECHANICAL PAGES.....	12
Slide Extend/Retract	12
Mechanical Page Select	12
Slide Run Warning.....	12
Slide Run Requirements Status.....	12
TV Lift Up/Down.....	13
TV Lift Location	13
Night & Day Shade Masters	14
Night Shades	14
Day Shades.....	14
Fan On / Off.....	15
Ceiling Fan Control.....	15
Fan Lid Up / Down.....	15
Fan Location.....	15
FAULT PAGE	16
Active Fault List	16
Diagnostic Page Select	16
Fault Warning.....	16
SETTINGS PAGE	17
Temperature Unit Toggle.....	17
Screen Brightness Adjust	17
Screen Settings.....	17
Switch Settings.....	17
Diagnostics	17
GUI Version	17
MIRA Mobile App.....	17
Time Adjustment.....	18
Coach Model Select.....	18
GLOSSARY.....	19

General function of screen buttons and indicators.....	19
HOW TO REMOVE A NETWORK CABLE.....	19
NET LED STATUS.....	19
DIAGNOSTIC LED FEATURES.....	20
NET LED Functions	20
SUPPORT	21

HOME PAGE



Figure 1 (Lighting Section)

- This section allows you to have quick control over frequently used lights in the coach.

Figure 2 (Tank Section)

- This section displays tank levels. The graph will indicate the levels of each tank and will also provide you with a warning when the tanks are low for fresh or full for grey and black. Liquid Propane Gas will only be displayed here if you have a Phaeton with LPG.

Figure 3 (Climate Section)

- This section displays climate information and current heating, cooling, and fan status. Press on this box to quickly jump to the climate page.

Figure 4 (Power Section)

- This section displays power information for your coach. This includes house and chassis battery status, merge status, AC power source, and AC power information. Press on this box to quickly jump to the power page.

Figure 5 (Information / Quick Action Ribbon)

- This ribbon displays the status for floor heat, water heat (electric or gas), generator, AGS, inverter, and charger. This ribbon also allows quick control or quick page access to each of the displayed items. The symbols and what they mean will be discussed below in more detail.

Figure 6 (Active Fault Warning)

- The active fault warning triangle will only appear on a screen when a fault is present. Touch the icon to jump to the fault page.

Home Page Continued



Figure 1A (Floor Heat)

- This displays the current state of your floor heat. The display may show on, off, shed, or standby. On means the floor is heating, standby means the floor has reached its set point. Please see the power page for information on the shed state. Press this section to jump to the climate page and make any adjustments.

Figure 2A (Select Source)

- This button allows control over your heat source. This will be either electric (lightning bolt) or diesel/gas (flame). Once the electric icon is pressed it will flash until the system has verified there is sufficient power for the electric heat. The diesel will flash if the burner has failed to ignite. Tap the button off then back on to try again. If the burner still does not ignite contact the water heater manufacture for support.

Figure 3A (GEN / AGS)

- GEN (Generator) when pressed will try to start the generator. It will flash during the starting process then will stay solid blue once the generator is running. AGS (Automatic Generator Start) will be enabled when this button is pressed and your ignition is cycled. Your AGS is enabled if this button is illuminated blue.

Figure 4A (INV / CHG)

- This displays your current INV (Inverter) and CHG (Charger) status. Press on either to enable or disable the inverter or charger functions. Please note we recommend never disabling your charger.

LIGHTING PAGE

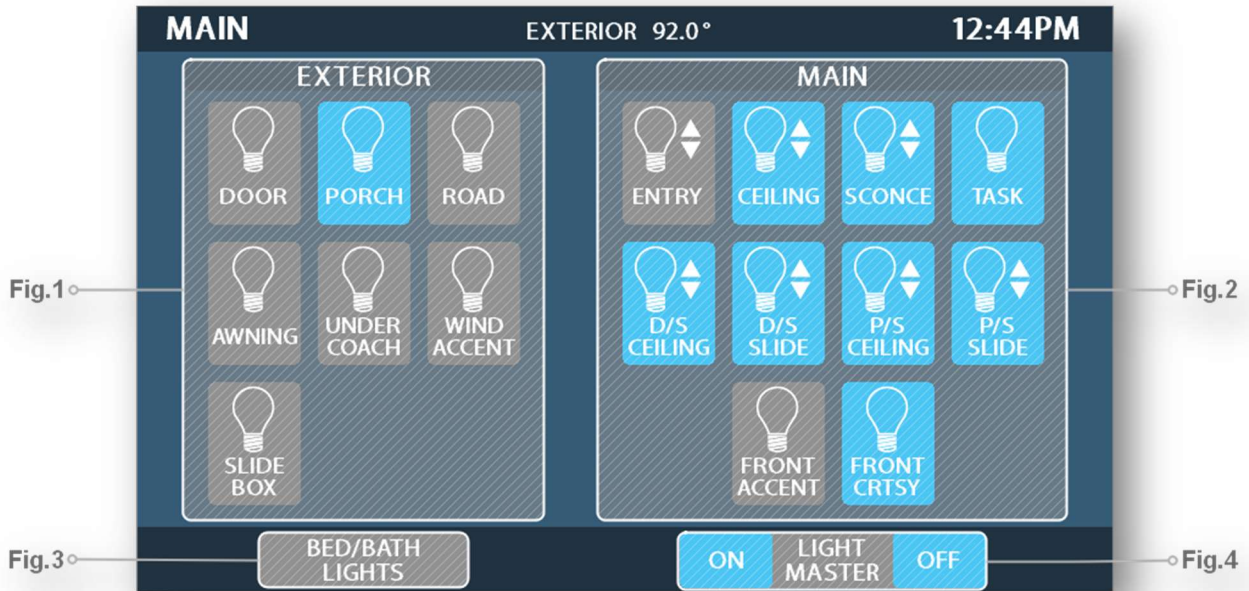


Figure 1 (Exterior)

- This section controls all of the lights outside the coach. All exterior lights do not dim.
 - Under coach (If applicable) - Can only be used when the park brake is set
 - Windshield accent (if applicable) - Will automatically turn on when driving

Figure 2 (Main)

- This section allows control over your main interior lights. Any lights that can dim will contain two arrows beside the light. Holding this light button will dim the lights. The light will remember its dimmed value until light master is held on. When light master is held on all previously dimmed lights will return to full brightness.



Figure 3 (Bed/Bath Lights)

- Press here to control your bed lights, bath lights, and bedroom ceiling fan

Figure 4 (Light Master)

- Press light master off to turn off any lights that are currently on in the coach. Press light master on to turn these same lights back on. Hold light master on to turn on all interior lights at full brightness.

POWER PAGE

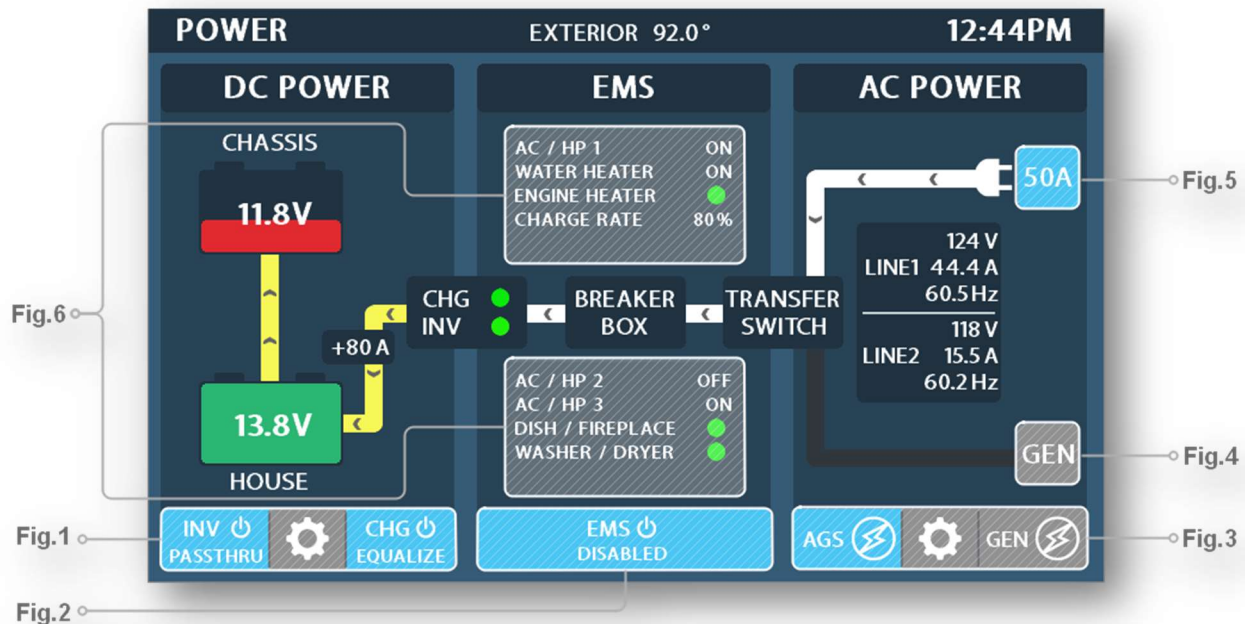


Figure 1 (Inverter / Charger Control + Settings)

- This button allows you to enable or disable your inverter or charger. This button will also show you the current status of the inverter and charger. IT IS RECOMMENDED TO LEAVE THE CHARGER ON. Press the gear icon located in the middle to access inverter/charger settings. Please note these settings should only be set according to the manufactures specifications.

Figure 2 (EMS)

- Pressing this will enable or disable the EMS (Energy Management System). The EMS takes into account your current power source and dictates which loads receive power. Loads that the system does not have power for, or is currently trying to turn on, will be labeled as "shed". Once power is available the shed load will be turned on. It is recommended to leave the EMS system enabled. Disabling EMS will allow all AC powered loads to operate. When disabled the user must manage AC loads to prevent the shore breaker from tripping.

Figure 3 (AGS/GEN)

- This button allows you to turn on and off your AGS (Automatic Generator Start) and toggle your GEN (Generator) on and off. Press the options button in the middle to access your AGS setting page.

Figure 4 (GEN Icon)

- Press this to start or stop your generator. When starting the button will flash then stay solid blue once the generator has started.

Power Page Continued

Figure 5 (Shore Power Select and Status)

- This icon will change depending on the type of power provided to your coach. On a 50A hook up it will display as shown in Fig.5. On 30A or less you will be given the option to select a shore breaker size of 15A, 20A, or 30A. Please note choosing a breaker size higher than the hookup is rated for will likely result in tripping the breaker.

Figure 6 (EMS Load Display)

- These sections will display major loads status as they are controlled by the EMS (Energy Management System). For example, AC / HP1 (Air conditioner / Heat pump 1) can show a state of on, off, or shed. Constant loads will have a green circle beside them when they can be used. A list of all loads that can be shed will be provided in the glossary.

CLIMATE PAGE

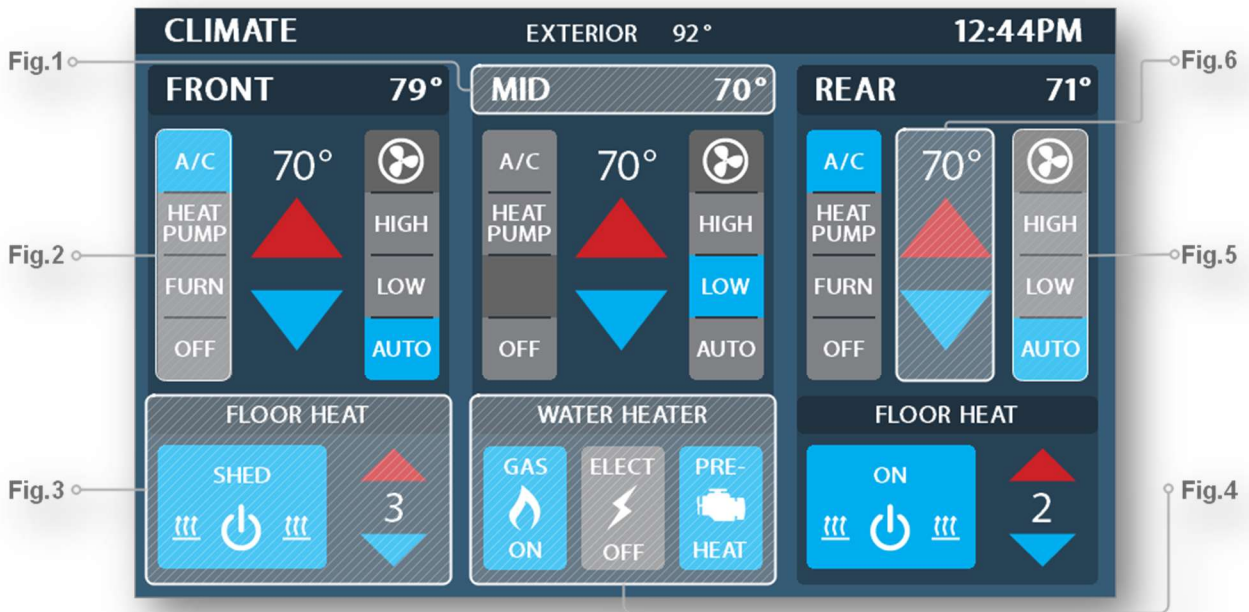


Figure 1 (Zone + Ambient Temperature)

- This section displays the location of the air-conditioning unit and the ambient temperature in the zone.

Figure 2 (HVAC Mode Select)

- This section provides control over your HVAC loads. Press an icon to activate it. AC loads will flash while they check with the EMS for available power. For safety and the longevity of the HVAC system, most HVAC loads have delays before turning on and off. Zones cannot have conflicting modes. Hence setting any AC unit to heating while the rest are in cooling will turn off all AC's and vice versa.

Figure 3 (Floor Heat)

- This section allows control over the floor heat. The 3 arrows rising indicate a heating status, meaning the floor is currently heating. Once the floor heat reaches temperatures it will enter standby mode. Temperature settings of 1-5 are available with 1 being the coolest and 5 being the warmest.

Climate Page Continued

Figure 4 (Water Heater)

- This button allows control over the heating mode for the water heater/Aqua-Hot. Electric, gas or both can be selected to heat the water system.
 - Once the electric icon is pressed it will flash until the system has verified there is sufficient power for the electric heat.
 - The diesel will flash if the burner has failed to ignite. Tap the button off then back on to try again. If the burner still does not ignite contact the water heater manufacture for support.
 - Engine preheat (if applicable) is used to preheat the engine with hot water from the Aqua-Hot System.

Figure 5 (Fan Control)

- This section allows control of the AC fan. When you run the AC in cooling mode you will be able to select either Fan High, Fan Low, or Auto. Auto mode will control the fan for you choosing the best time to switch from High to Low. It is recommended having the fan on high or auto when cooling the coach with the AC. Running the fan on low with the AC on can cause the AC to prematurely freeze up.

Figure 6 (Temperature Set Point)

- This section allows control over the HVAC set point in the coach. To heat the coach with your furnace or heat pumps you must first select heat pump or furnace then set your set point above the current ambient temperature (Fig.1) To cool the coach you must select AC then set your set point below the ambient temperature (Fig.1)

MECHANICAL PAGES

SLIDES

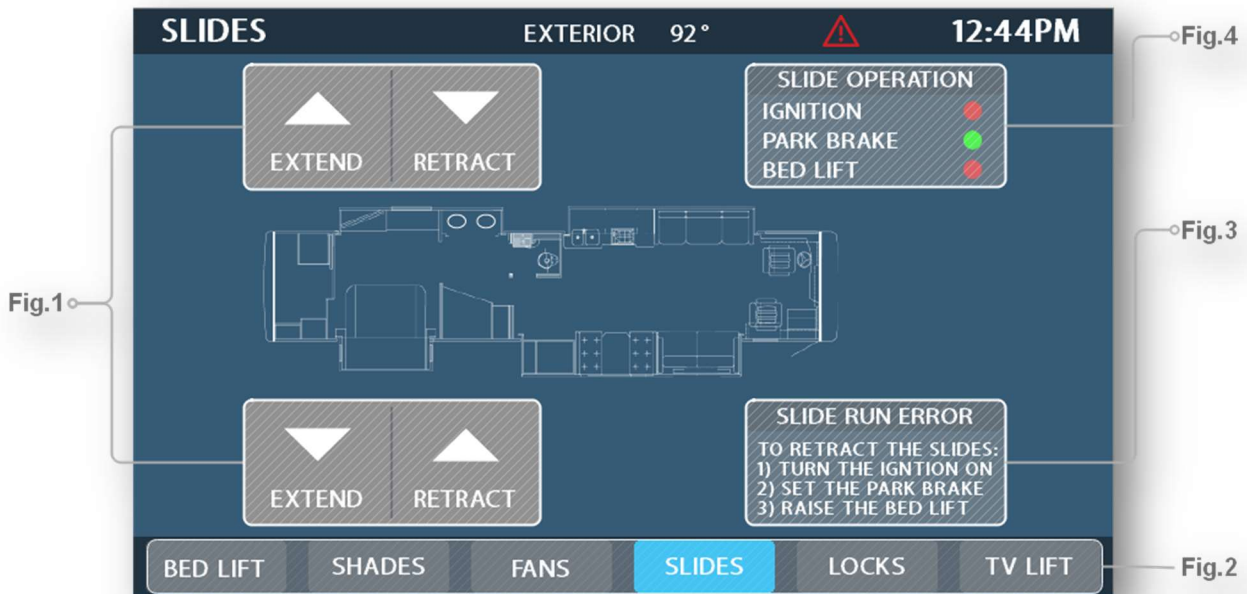


Figure 1 (Slide Extend/Retract)

- Pressing these buttons will extend and retract your slides if the requirements shown in Fig.3/4 are met.

Figure 2 (Mechanical Page Select)

- Use this bar to jump between various mechanical loads in your coach.

Figure 3 (Slide Run Warning)

- This warning will appear when you try to run your slides if one or more of the following conditions are not met
 - The ignition is not on
 - The park brake is not set
 - The bed lift is not raised (if applicable)

Figure 4 (Slide Run Requirements Status)

- This section shows the status of ignition, park brake and bed lift (if applicable). All must be green before the slides can retract or extend.

TV LIFT

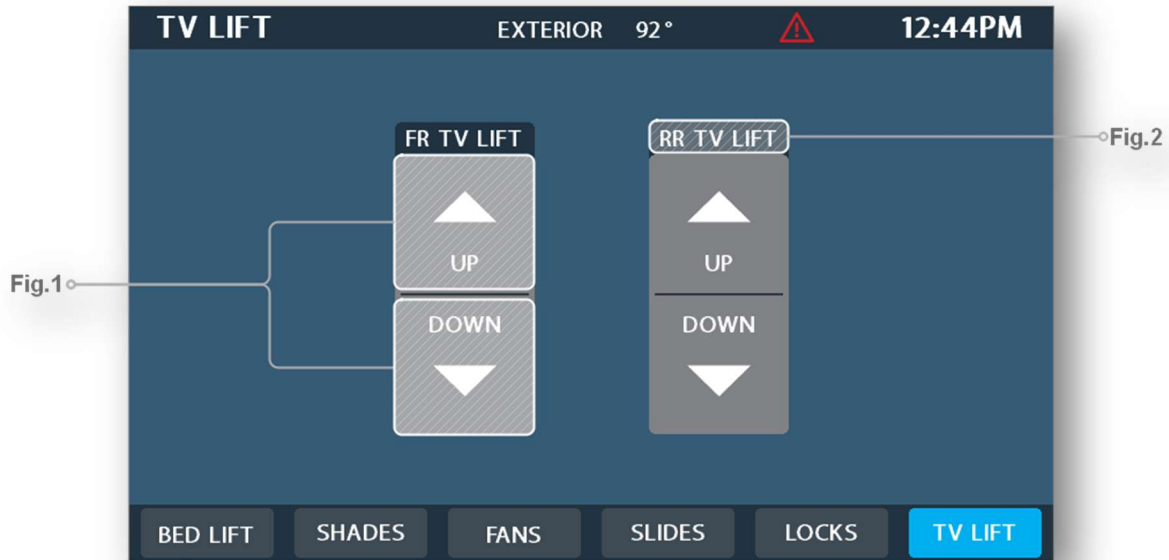


Figure 1 (TV Lift Up/Down)

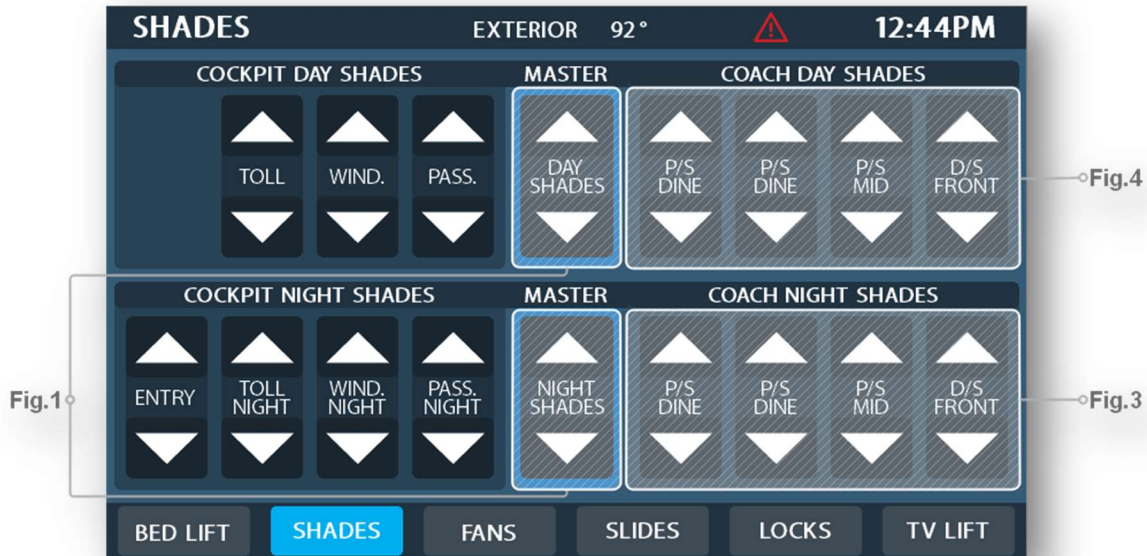
- Press the TV lift button to raise the TV lift. **Press and Hold** the TV lift down button to lower the TV.

Figure 2 (TV Lift Location)

- This banner indicates the location of the TV Lift controlled by the buttons below (if applicable).

Please note a press and hold is required to lower a TV Lift, this is to ensure that nothing is pinched when the TV Lift is lowered.

SHADES



When using a shade pressing the up or down arrow will raise the shade all the way up or lower it all the way down. To adjust a shade to a specific height, press and hold the up or down arrow, then release at the desired level.

Figure 1 (Night & Day Shade Masters)

- Press Day Shade Master to raise or lower all day shades. Press Night Shade Master to raise or lower all night shades.

Figure 2 (Night Shades)

- Press any button in Cockpit Night Shade or Coach Night Shade to raise or lower that specific night shade.

Figure 3 (Day Shades)

- Press any button in Cockpit Day Shade or Coach Day Shade to raise or lower that specific day shade.

FANS



Figure 1 (Fan On / Off)

- Press this to toggle the selected fan on and off.

Figure 2 (Ceiling Fan Control)

- This button allows control of the ceiling fan (if applicable). Press the corresponding buttons to select fan speed.

Figure 3 (Fan Lid Up / Down)

- Press this to raise or lower the vent fan lid. To select an exact vent fan lid position, press and hold the up or down arrow on the vent fan. Once you have reached the desired level, release the button.

Figure 4 (Fan Location)

- This banner indicates the location of the vent fan controlled by the buttons below (if applicable).

FAULT PAGE

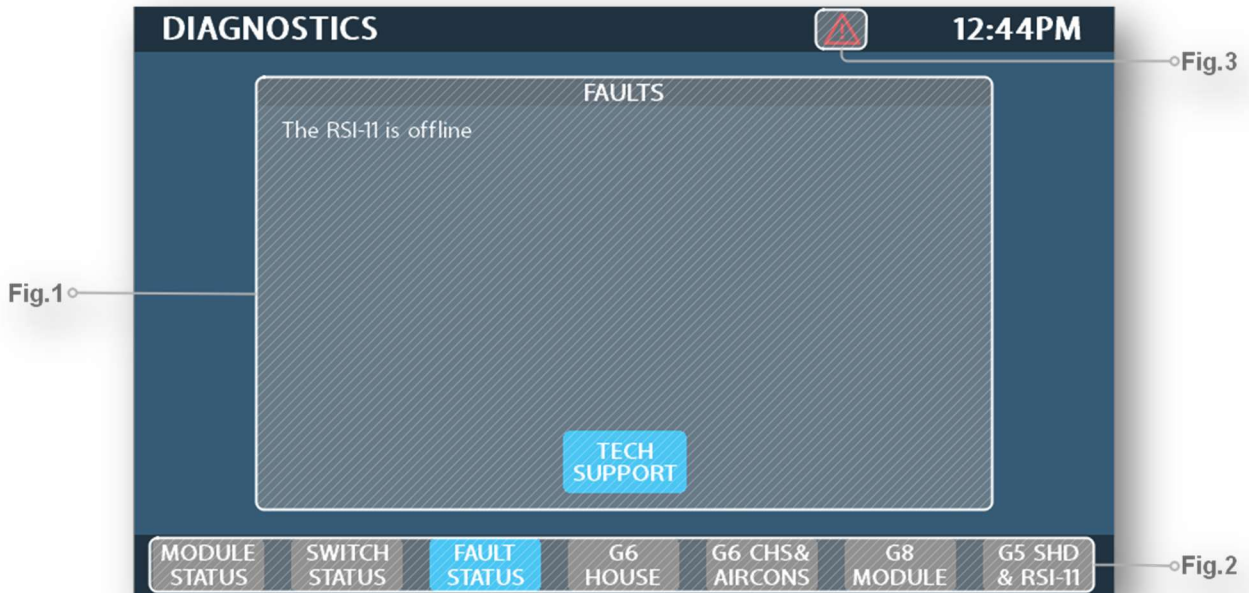


Figure 1 (Active Fault List)

- This list will show any active fault in the coach, if a fault appears here please contact Spyder Controls for trouble shooting. Press the tech support button to view Spyder Controls support information.

Figure 2 (Diagnostic Page Select)

- Use this to navigate between diagnostic pages. Please note these pages are generally only used to troubleshoot coach problems.

Figure 3 (Fault Warning)

- If this is visible on any screen, press it to bring you to the fault page. This will only appear when a fault is active

SETTINGS PAGE

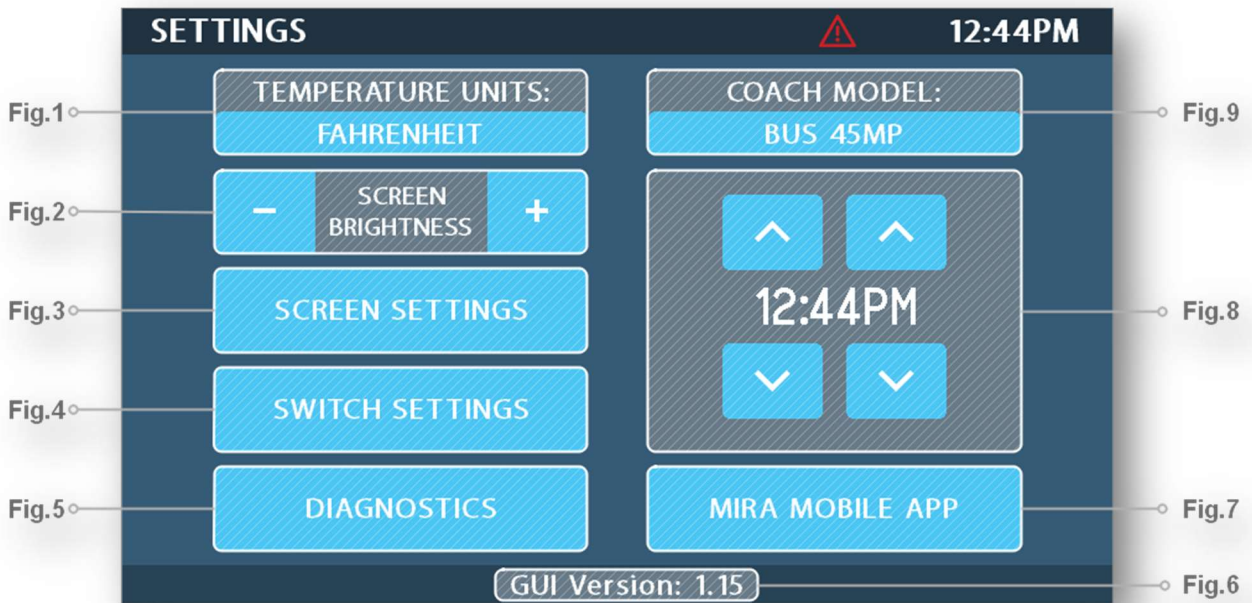


Figure 1 (Temperature Unit Toggle)

- Press this to toggle temperature units between Celsius and Fahrenheit

Figure 2 (Screen Brightness Adjust)

- Press + to increase and – to decrease the screen brightness

Figure 3 (Screen Settings)

- Press this to access screen timeout, default screen and screen theme adjustment.

Figure 4 (Switch Settings)

- This section allows you to toggle your switch panel proximity sense on and off.

Figure 5 (Diagnostics)

- Press here to jump to the diagnostic pages (These are generally only used by technicians when troubleshooting)

Figure 6 (GUI Version)

- This shows the version of your screens program. Spyder may ask for this during service

Figure 7 (MIRA Mobile App)

- Press this to set up mobile coach control via the MIRA module

Settings Page Continued

Figure 8 (Time Adjustment)

- Use the up and down arrows to adjust the system time, please note for AGS to work your coach time must be set correctly.

Figure 9 (Coach Model Select)

- This displays your coach model, if this is set wrong, please contact Spyder Controls.

GLOSSARY

General function of screen buttons and indicators

- Screen buttons will generally be grey when disabled and blue when enabled.
- On diagnostic pages a green dot indicates the load is on while grey indicates a load is off

AGS -Automatic Generator Start

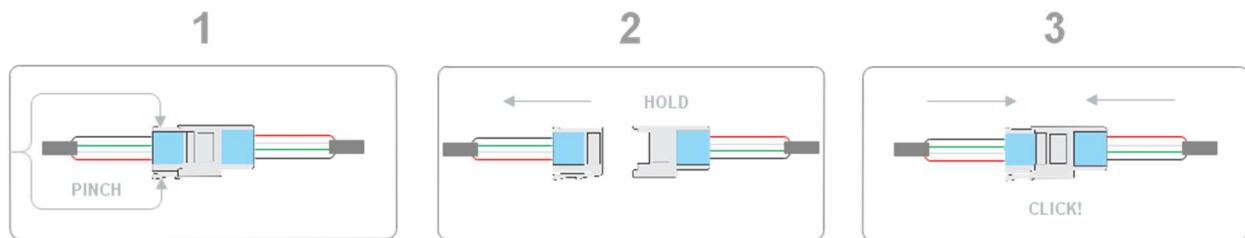
EMS -Energy Management System

Load - Any electrical device controlled by the Spyder Multiplex System (i.e. Bathroom Lights, Air conditioner compressor, Water Pump, etc)

Constant Loads - Electrical devices that use constant power to function though they may not user power all of the time (i.e. Dishwash, Fireplace, Washing Machine)

HVAC -Heating, Ventilation and Air Conditioning

HOW TO REMOVE A NETWORK CABLE



To remove a network clamp from a socket or another type of connector follow three simple steps

1. Pinch the small black clamp
2. While pinching the plug and holding the socket/connector, pull the plug
3. To reconnect push the plug end into the socket/connector until you hear an audible click

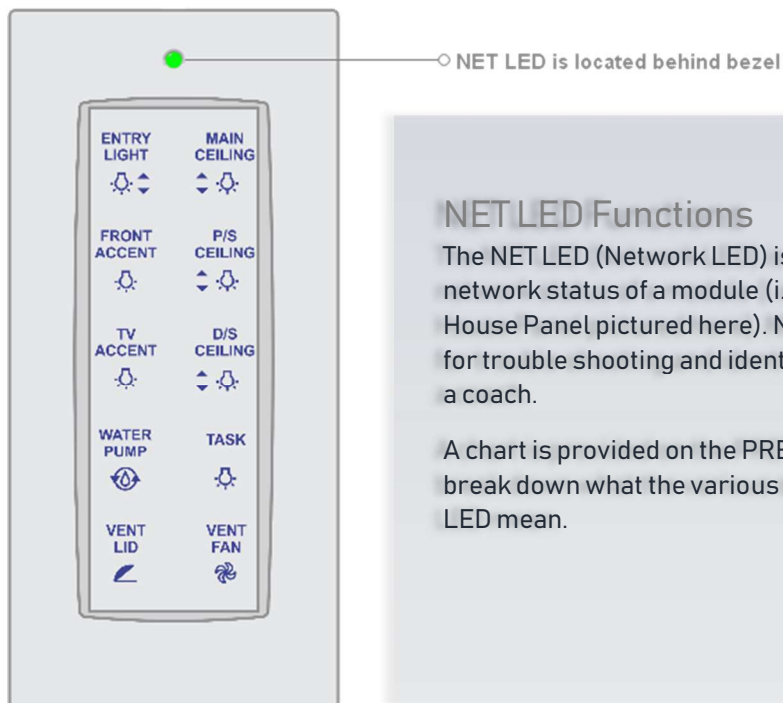
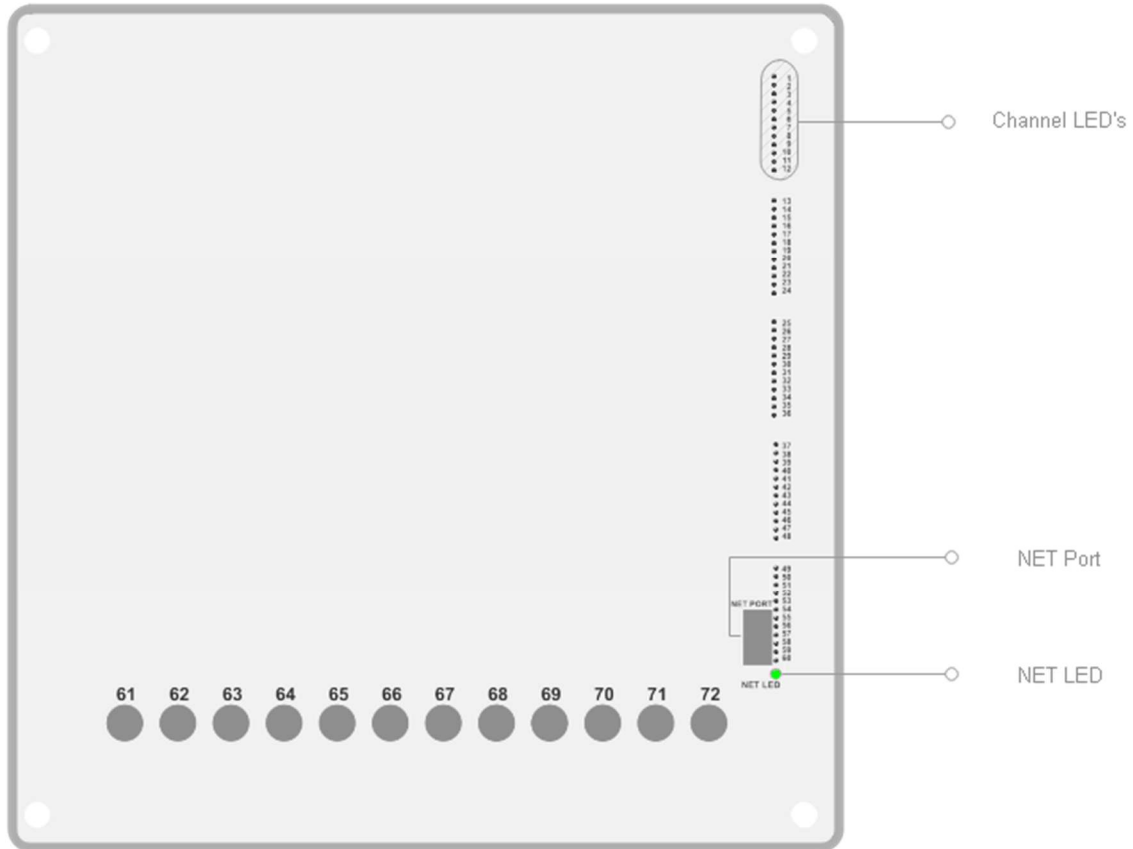
NET LED STATUS

NETWORK STATUS LED INDICATOR

	SOLID GREEN - Device is connected to network and communicating properly
	LED OFF - Device has no power or has failed completely
	SOLID RED - Device has gone offline and is not connected to the network
	FAST FLASHING GREEN (4 times / sec) - Device is attempting to make initial connection and claim a network address
	SLOW FLASHING GREEN (1 times / sec) - Device is online but has not seen a valid network message in 5 seconds
	ALTERNATING RED & ORANGE - Device has gone offline and is attempting to re-connect (within 30 seconds)
	ALTERNATING GREEN & ORANGE - Device is currently online but has gone offline 2 or more times

DIAGNOSTIC LED FEATURES

CONTROL PANEL LED INDICATORS



NET LED Functions

The NET LED (Network LED) is used to identify the network status of a module (i.e. Switch panel, G6 House Panel pictured here). NET LED's are useful for trouble shooting and identifying and issue with a coach.

A chart is provided on the PREVIOUS page to help break down what the various states of the NET LED mean.

SUPPORT

If you have any questions or concerns about your Spyder Controls Multiplex System please contact Spyder Controls toll free at (866) 919-9092 or reach us by email at info@spydercontrols.com.

For service manuals and helpful videos on your coach please visit Spydercontrols.com press "login" then enter the following information into the username and password fields

Username: Tiffin

Password: Motorhomes



Use your phone camera or QR code scanner to view our website